

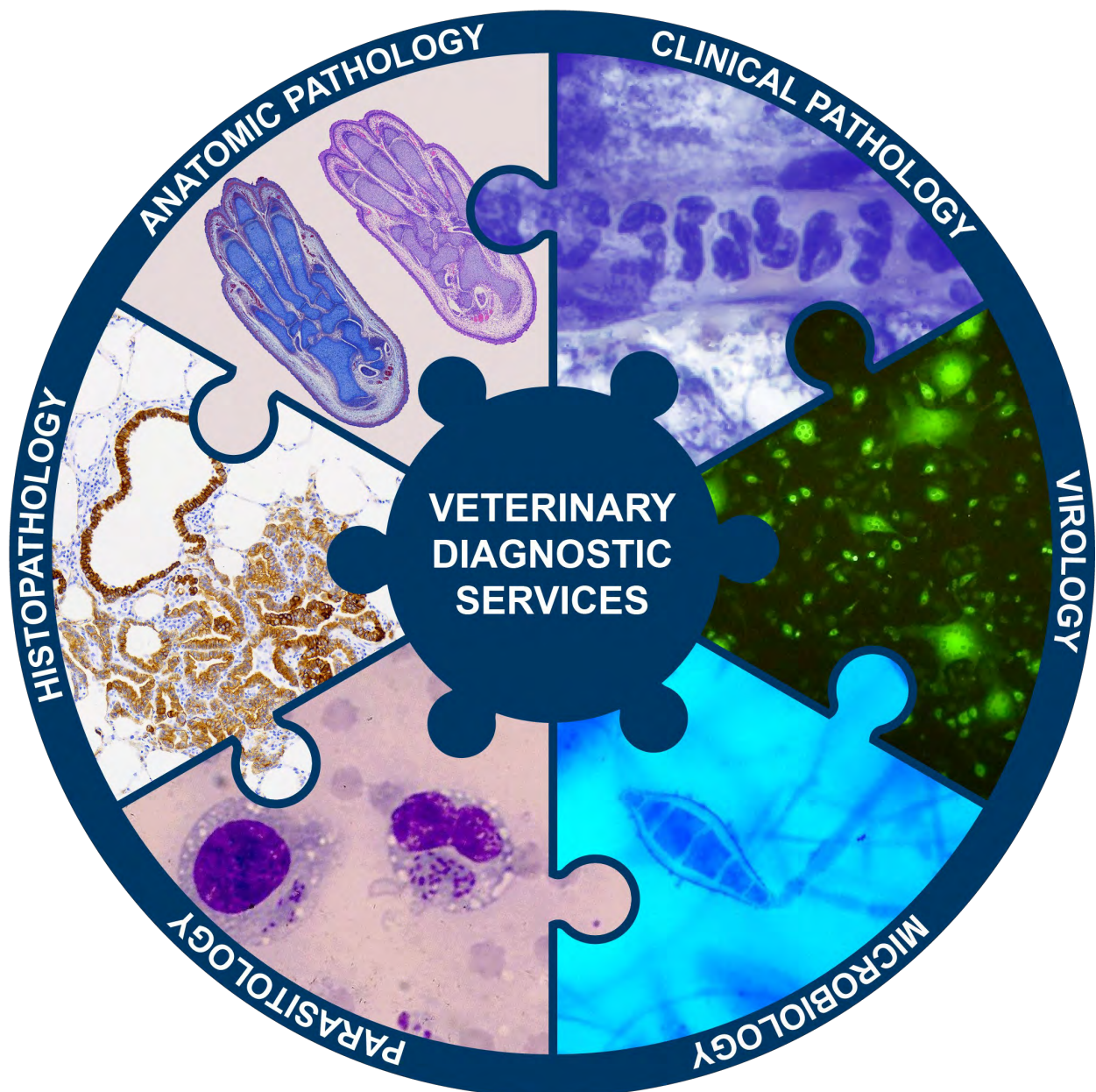


University
of Glasgow

School of Biodiversity,
One Health &
Veterinary Medicine

Veterinary Diagnostic Services

Price List | June 2023





Veterinary Diagnostic Services

WHY CHOOSE US?

Comprehensive and Expert Laboratory Service

Veterinary Diagnostic Services are at the School of Biodiversity, One Health & Veterinary Medicine, University of Glasgow:

- We offer a comprehensive service covering all species, together with a wide range of tests.
- We pride ourselves on our personal approach, providing both the level of support and advice that you require.
- Our pathologists and veterinary diagnostic specialists participate in development and educational activities, are cognisant of veterinary and medical literature and liaise closely with on-site clinicians in the small animal, equine and farm animal services.
- Our ongoing development work ensures that you receive the latest diagnostic support.
- We have a wealth of experienced technical staff, who ensure that our tests and our reporting are of the highest quality.

SAMPLE SUBMISSIONS

To help you in the submission process, we provide:

- FREEPOST address labels for sample submission
- Personalised submission forms - available on request
- Competitive pricing

SAMPLE REPORTING

We will report results in a format convenient for you.

OUR SERVICE

We offer testing in the disciplines of haematology, cytology, biochemistry including endocrine testing, urinalysis, virology, bacteriology, mycology, parasitology, histopathology and post-mortem examinations.

We provide a service to veterinary surgeons in both first opinion and referral practices.

Contents	Page
Clinical Pathology Biochemistry and Haematology	3
Clinical Pathology Fluid analysis, Cytology, Endocrinology, Urinalysis and Additional Tests.	4
Infectious Diseases Feline Virology and Profiles	5
Infectious Diseases Canine Virology and Profiles	6
Infectious Diseases Bacteriology, Parasitology and Molecular Testing	7
Pathology Biopsy Biopsy Service, Histopathology, Immunohistochemistry and Infectious Disease Markers	8
Pathology Necropsy Post Mortem Examination and Disposal Charges	9
Histopathology Research Service Histology Processing, Immunohistochemistry and Digital Slide Scanning Service	10
Contact Details	11

Legend to photographs in the front page splash image:

Clinical Pathology: Neutrophils in small blood vessel within a lung tumour; May-Grüwald Giemsa stain.

Virology: Feline immunodeficiency virus (FIV) immunofluorescence assay (IFA).

Microbiology: *Microsporium canis* macroconidia; lactophenol cotton blue stain.

Parasitology: *Theileria macroschizont* in blood smear.

Histopathology: Ovine pulmonary adenocarcinoma (OPA) in a sheep; anti-cytokeratin immunohistochemistry (IHC).

Anatomic Pathology: Paw from mouse embryo, left: Masson's Trichrome stain, right: H&E stain.

Veterinary Diagnostic Services

Clinical Pathology Prices June 2023

Prices are exclusive of VAT. Charity No SC004401

BIOCHEMISTRY (*Heparin / Clotted*) PRICE

* Full biochemistry profile

As **Routine** plus Glucose **£40.00**

(Please Include Fluoride Oxalate sample for Glucose)

* Routine biochemistry profile (Cats and dogs)

As **Basic** plus AST, GGT, Bilirubin, Electrolytes, **£37.00**

Calcium, Phosphate, Chol, Trig

* Basic biochemistry profile

Total Protein, Albumin, Glob, Alk Phos. ALT, Urea, Creatinine **£24.00**

Electrolyte profile

Sodium, Potassium & Chloride & Na:K Ratio **£18.00**

Additional full haematology when included with profiles marked with an asterisk (*) Add £21.00

HAEMATOLOGY (*EDTA blood & smears*) PRICE

Full haematology

Including smear examination, RBC, Hct, Hb, MCV, MCH, MCHC, RDW, WBC & Differential count, Platelet count **£27.00**

Coagulation screen

(Citrate Blood) **£29.00**
PT, KCCT, Fibrinogen

Blood smear examination only

Cytological examination of submitted (air-dried) smear including examination for blood parasites **£22.00**

CSF profile

(CSF fluid in EDTA/Plain tube) **£32.00**
Cell count, Differential, Cytospin examination and Protein

BIOCHEMISTRY PROFILES PRICE

* Liver profile 1 (*Heparin or Clotted*)

Total protein, Albumin, Globulin, **£24.00**
Alkaline phosphatase, ALT, Bilirubin

* Liver profile 2 (*Heparin or Clotted*)

As Liver 1 plus GGT, AST, Bile Acids resting and postprandial **£33.00**

* Pancreatic profile (*Heparin or Clotted*)

Urea, Creatinine, Triglyceride, Amylase, Lipase **£27.00**

* Equine profile (*Heparin or Clotted*)

Total Protein, Alb, Glob, Alk Phos, GGT, AST, TBil/DBil, Urea, Creatinine, Calcium, Phosphate, **£43.00 with GLU £45.00**

* Kidney profile 1 (*Heparin / Clotted + Urine*)

Total Protein, Albumin, Globulin, Urea, Creatinine, Phosphate & Urine Specific Gravity **£25.00**

* Kidney profile 2

as Kidney 1 plus Calcium, Electrolytes, Cholesterol **£30.00**

* Hyperthyroid cat profile (*Heparin or Clotted*)

Total Protein, Albumin, Glob, Alk.Phos, ALT, Urea, **£38.00**

* Ruminant profile (*Heparin or Clotted*)

Total Prot. Alb, Glob, Alk.Phos, GGT, AST, GLDH, Bilirubin, Urea, Creatinine, Calcium, Phosphate, **£38.00**

* Downer cow profile (*Heparin or Clotted*)

Calcium, Phosphate, Magnesium, Creatine Kinase, Urea, BHB **£25.00**

Diabetic monitoring 1

Fructosamine (*Clotted or Heparin*) **£25.00**
Glucose (*Fluoride Oxalate*)

Diabetic monitoring 2 Canine only

Fructosamine (*Clotted or Heparin*) **£44.00**
Glucose (*Fluoride Oxalate*)
Haemoglobin A1c (*EDTA*)

Vitamin B12 and Folate (*Clotted*) (Canine Only)

Feline prices on request **£45.00**

cTLI combo (*Clotted*)

Trypsin-Like Immunoreactivity, Vitamin B12 and Folate **£80.00**

Protein profile (*Heparin or Clotted*)

Total Proteins, Albumin, Globulin, A:G ratio **£18.00**

Tel: +44 (0)141 330 5777 / 6915 | Website: www.gla.ac.uk/vds

Email: vds@glasgow.ac.uk and vet-clinpath@glasgow.ac.uk

Veterinary Diagnostic Services

Clinical Pathology Prices June 2023

Prices are exclusive of VAT. Charity No SC004401

FLUID ANALYSIS	PRICE
Full fluid analysis	
Cell counts, proteins and cytology, inc. cytologists report	£36.00
Fluid proteins	£18.00
Total Protein, Albumin, Globulin, A:G ratio	
Fluid cytology (e.g. lavages)	£32.00
Cell counts, smear exam	
Fluid cholesterol / triglyceride	£17.00
CYTOLOGY	PRICE
FNA cytology (1st site) 1-3 slides	£36.00
(Including cytologists report: FNA, Touch Prep or submitted smears (air-dried))	
Every additional 1-3 slides from 1st site	£18.00
FNA cytology - additional site(s) 1-3 slides	£18.00
Every additional 1-3 slides	£18.00
ADDITIONAL TESTS	PRICE
Single biochemistry tests, each unless otherwise stated.	£10.00
Bile acids - resting, pre or post prandial (each) (Clotted or Heparin)	£17.00
Bile acids - (2x samples) Pre + Post prandial (Clotted or Heparin)	£28.00
Bile acid stim (x3 samples) Pre stim, 1hr post stim, 2hr post stim (Clotted or Heparin)	£39.00
Troponin (Clotted)	£24.00
Fibrinogen (Citrated Blood)	£12.00
Fibrinogen Degradation Products (Citrated Blood)	£21.00
D-Dimer (Citrated Blood)	£24.00
Reticulocyte count (EDTA blood)	£11.00
Fructosamine (Clotted or Heparin)	£20.00
Phenobarbitone (Clotted – NOT gel)	£26.00
Direct Coombs Test (EDTA Blood & Smear)	£35.00
CRP (C-reactive protein) (Clotted)	£20.00
Serum protein electrophoresis (Clotted)	£39.00

ENDOCRINOLOGY (Clotted)	PRICE
T4/canine TSH profile	£40.00
State time if T4 post pill	
ACTH stimulation test - 2x Cortisol	£38.00
DEX suppression test - 3x Cortisol	£50.00
Cortisol (resting) "One off" test only	£22.00
T4 (state time if post pill)	£25.00
Canine TSH	£33.00
URINALYSIS	PRICE
Full urine analysis	£36.00
Full Urinalysis: Qualitative, quantitative and deposit	
Deposit examination	
RBC, WBC, epithelial cells, sperm, organisms, cell debris, yeasts & casts	£20.00
Qualitative (dipstick) analysis	
Qualitative protein, glucose, ketones, haemoglobin, pH, specific gravity	£17.00
Quantitative analysis	£20.00
Protein, Creatinine, Prot:Creat ratio	

Tel: +44 (0)141 330 5777 / 6915 | **Website:** www.gla.ac.uk/vds

Email: vds@glasgow.ac.uk and vet-clinpath@glasgow.ac.uk

Veterinary Diagnostic Services

Infectious Diseases Prices June 2023

Prices are exclusive of VAT. Charity No SC004401

FELINE RETROVIRUSES	PRICE
FeLV antigen	
Routine screening test; to confirm an in-clinic positive test request PCR or VI	£24.00
FeLV qPCR	£32.00
To confirm in-clinic positive test	
FeLV virus isolation	£32.00
To confirm in clinic positive test	
FeLV antigen + virus isolation	£42.00
FeLV antigen + qPCR	£42.00
FeLV antigen + qPCR + virus isolation	£68.00
FIV antibodies (IFA)	£26.00
Confirmed by western blot as required	
FIV antibodies by western blot	£37.00
Feline retrovirus profile	£39.50
FeLV antigen and FIV antibodies	
FeLV, FIV, FCoV	£51.50
FELINE INFECTIOUS PERITONITIS	PRICE
FIP profile	£51.00
FCoV Ab, α1-AGP, A:G, haematology / cytology	
FCoV antibodies + α1-AGP	£34.00
FCoV antibodies	£23.50
α1-AGP	£19.00
FCoV antibodies + FCoV RT-qPCR	£51.50
FCoV RT-qPCR	£41.00
(Faeces, effusion)	
FCoV RT-qPCR	£78.00
(Fine needle aspirate, tissue biopsy)	
FIP profile + FCoV RT-qPCR	£78.00
(RT-qPCR on faeces, effusion)	
OTHER FELINE TESTS	PRICE
FCV plaque typing (FCV must be isolated first)	£63.00
To distinguish field and vaccine FCV	
FeLV virus neutralising antibodies	£47.50
Not for demonstrating immunity post vaccination	
FeLV virus isolation from bone marrow	£63.00

FELINE RESPIRATORY DISEASE	PRICE
Respiratory virus isolation from swabs	£26.00
Feline herpesvirus, feline calicivirus	
Virus isolation from tissues	£27.00
Feline cowpox virus, feline herpesvirus, feline calicivirus	
FHV qPCR	£32.00
Chlamydia felis qPCR	£32.00
Chlamydia felis qPCR + FHV qPCR	£47.50
Respiratory virus isolation + FHV qPCR	£47.50
Respiratory virus isolation + C. felis qPCR	£47.50
Triple respiratory profile	£59.00
Resp. virus isolation, FHV qPCR, C. felis qPCR	
Feline conjunctivitis profile	£79.00
FHV qPCR, C. felis qPCR, Mycoplasma culture and M. felis qPCR	
Feline conjunctivitis profile 2	£63.00
FHV qPCR, C. felis qPCR, M. felis qPCR	
OTHER FELINE DISEASE PROFILES	PRICE
Gingivitis profile	£51.50
Resp. virus isolation, FeLV Ag, FIV Ab	
Feline diarrhoea profile	£43.00
Bacteriology, parasitology, NOT including Cryptosporidium investigation	
Feline diarrhoea profile plus	£122.00
Diarrhoea profile including Cryptosporidium, FCoV RT-qPCR, Giardia qPCR, T. foetus qPCR	
Feline Parasitology PCR	£59.50
Giardia qPCR & T. foetus qPCR	
Pyrexia cat profile	£71.00
FeLV Ag, FIV Ab, FCoV Ab, haematology, ALP, ALT	
Feline uveitis profile	£61.00
FeLV Ag, FIV Ab, FCoV Ab, Toxoplasma antibodies	
Feline neurological profile	£61.00
FeLV Ag, FIV Ab, FCoV Ab, Toxoplasma antibodies	
Feline parvovirus profile	£46.50
FPV PCR and FPV antibodies	
Feline parvovirus antibodies (HAI)	£27.00
Feline parvovirus PCR	£32.00

Tel: +44 (0)141 330 5777 | Website: www.gla.ac.uk/vds

Email: vds@glasgow.ac.uk | Clinical Enquiries: vet-id@glasgow.ac.uk

Veterinary Diagnostic Services

Infectious Diseases Prices June 2023

Prices are exclusive of VAT. Charity No SC004401

DOES THE DOG NEED A VACCINE	PRICE
CPV, CDV and CAV antibodies	£50.50
DIAGNOSTIC TESTING OF SICK DOGS	PRICE
Canine Parvovirus (CPV) antibodies Submit paired sera in sick vaccinated dogs (£33.00)	£21.50
Canine Parvovirus (CPV) PCR	£32.00
Canine Coronavirus (CCV) antibodies	£23.50
Canine Coronavirus qPCR	£41.00
Canine Parainfluenza virus (CPiV) antibodies Not for demonstrating immunity post vaccination. Submit paired sera in sick vaccinated dogs (£34.00)	£24.00
Canine Parainfluenza virus isolation	£28.00
Canine Adenovirus (CAV) antibodies Specify CAV1 or CAV2 or select both CAV1 & CAV2 in sick vaccinated dogs (£33.00)	£23.00
Canine Adenovirus isolation	£27.00
Canine Herpesvirus (CHV) antibodies Not for demonstrating immunity post vaccination	£23.00
Canine Herpesvirus isolation	£27.00
Canine Distemper virus (CDV) antibodies Submit paired sera in sick vaccinated dogs (£37.00)	£23.00
Canine Adenovirus 1 (CAV1) qPCR	£37.00
Canine Adenovirus 2 (CAV2) qPCR	£37.00
Canine Herpesvirus (CHV) qPCR	£37.00

CANINE DISEASE PROFILES	PRICE
Canine Parvovirus profile CPV PCR & CPV antibodies	£42.00
Canine Diarrhoea profile Bacteriology & parasitology NOT including <i>Cryptosporidium</i> investigation	£43.00
Canine diarrhoea profile plus Canine diarrhoea profile PLUS <i>Giardia</i> PCR, CCV PCR and <i>Cryptosporidium</i> investigation	£96.00
Canine Respiratory Virus isolation from Swabs CPiV, CAV2, CHV	£28.00
Canine Respiratory Virus isolation from Tissue CPiV, CAV2, CHV	£30.00
Canine respiratory profile <i>Bordetella</i> culture, canine respiratory virus isolation, CPiV antibodies	£61.00
Canine blue eye profile CAV1 & CAV2 antibodies	£35.00
Canine neurological profile <i>Neospora caninum</i> and <i>Toxoplasma gondii</i> antibodies	£45.50

Tel: +44 (0)141 330 5777 | Website: www.gla.ac.uk/vds

Email: vds@glasgow.ac.uk | Clinical Enquiries: vet-id@glasgow.ac.uk

Veterinary Diagnostic Services

Infectious Diseases Prices June 2023

Prices are exclusive of VAT. Charity No SC004401

BACTERIOLOGY & MYCOLOGY	PRICE
Full culture and sensitivity	£30.00
Aerobic / anaerobic culture as required	
Enrichment culture and sensitivity	£37.00
(Blood, joint fluid, CSF)	
Gram / Modified Ziehl Neelsen stain	£12.50
Campylobacter check	£16.50
Identification available please contact the lab	
Fungal culture including Dermatophytes	£23.50
Mycoplasma culture and <i>M. felis</i> real-time qPCR	£44.50
Mycoplasma culture	£27.00
<i>Bordetella bronchiseptica</i>	£27.00
Culture and sensitivity	
*Minimum Inhibitory Concentration (MIC) and sensitivity	£59.00
PARASITOLOGY	PRICE
<i>Toxoplasma gondii</i> antibodies IgG and/or IgM	£22.00
<i>Neospora caninum</i> antibodies IgG and/or IgM	£32.00
<i>Giardia lamblia</i> qPCR	£37.00
<i>Tritrichomonas foetus</i> qPCR	£37.00
Protozoan screen	£14.50
<i>Cryptosporidium</i> spp.	£14.50
<i>Aelurostrongylus abstrusus</i> / <i>Angiostrongylus vasorum</i>	£14.50
Nematode & cestode egg screen	£14.50
Ectoparasite screen	£14.50
(Skin scrape)	
Feline / Canine parasitology faecal screen	£37.00
Nematodes, cestodes, protozoa, <i>Cryptosporidium</i> spp.	
<i>Toxoplasma gondii</i> antibodies (Total Ig and/or IgG)	£22.00
For non-domestic felids, non-domestic canids and other mammalian species (please enquire to check suitability for specific species)	

OTHER MOLECULAR TESTING	PRICE
<i>Bordetella bronchiseptica</i> PCR	£32.00
Feline and Canine	
<i>Mycoplasma cynos or canis</i> PCR (Canine)	£32.00
(BAL, tracheal washes)	
Pan-<i>Mycoplasma</i> spp. PCR	£32.00
Not for routine screening – please contact to discuss	
Pan-<i>Mycoplasma</i> spp. PCR and amplicon sequencing	£60.00
Not for routine screening – please contact to discuss	
<i>Encephalitozoon cuniculi</i> PCR (Rabbit)	£32.00
Ferret Coronavirus RT-PCR	£32.00
<i>C. perfringens</i> cpe toxin PCR (All species)	£32.00
Feline Poxvirus qPCR (Cowpox)	£37.00
Samples from other mammalian species can also be tested	
* † Canine Distemper (CDV) qPCR	£52.50
* † <i>Toxoplasma gondii</i> qPCR (Feline and Canine)	£52.50
* † <i>Neospora caninum</i> qPCR (Canine)	£52.50
* <i>Leptospira</i> spp. qPCR (All species)	£85.50
* Indicates test sent to an external laboratory.	
† Indicates discount available for multiple PCR tests from the same sample	

Tel: +44 (0)141 330 5777 | Website: www.gla.ac.uk/vds

Email: vds@glasgow.ac.uk | Clinical Enquiries: vet-id@glasgow.ac.uk

Veterinary Diagnostic Services

Pathology Prices June 2023

Prices are exclusive of VAT. Charity No SC004401

HISTOPATHOLOGY / BIOPSY SERVICE		PRICE
1-3 slides stained with H&E - including GI up to 3 sites		£53.00
4-6 slides stained with H&E		£78.00
Additional H&E slides - per slide		£11.00
Special stains - PAS, ZN, Gram (per stain) Standard / Complex		£11.50 / £16.50
Equine liver biopsy - H&E, Perls' Prussian Blue, Masson's Trichrome		£63.00
Canine liver biopsy - H&E, Rhodanine, Masson's Trichrome		£63.00
Large biopsy specimen submissions - amputated leg, entire spleen, large hepatic or pulmonary lobectomy specimens etc. A pathologist will select and trim an adequate number of samples for histopathological assessment.		£130.00 (includes up to 5 slides; additional slides charged as below)
Referral block interpretation (second opinion)	Up to 2 blocks	£60.00
	3-4 blocks	£75.00
Up to 2 special stains can be included in the assessment without additional charge at the discretion of the veterinary pathologist. The pathologist can advise for immunohistochemical investigations which come at an extra-charge as per prices detailed below.		
PMEs in a pot (samples collected at PM examination by the referring vet)		PRICE
2-3 tissues		£53.00
4-6 tissues		£83.00
7-10 tissues		£153.00
IMMUNOHISTOCHEMISTRY (IHC) Cost per block, including interpretation		PRICE
Single antibody (with control)		£50.00
Additional antibodies		£30.00 each
Additional slides using same antibody		£20.00 each
A wide range of antibodies are available. Pathologists will suggest the most relevant antibodies dependent on H&E findings. If you wish to request specific antibodies, please email the laboratory (vet-histology@glasgow.ac.uk) to check availability.		
INFECTIOUS DISEASE MARKERS Cost per block, including interpretation		PRICE
Feline coronavirus	May be of value in cases of suspected feline infectious peritonitis	£50.00
Toxoplasma gondii	Can be applied to a wide range of species	£50.00
Pneumocystis carinii	Cross-reacts with canine Pneumocystis spp	£50.00
We offer a specialised immunohistochemistry service for research including optimisation of custom antibodies and are continually updating our range of antibodies. Please contact us to discuss your specific requirements.		

Tel: +44 (0)141 330 5777 | Website: www.gla.ac.uk/vds

Email: vds@glasgow.ac.uk

Veterinary Diagnostic Services

Diagnostic Post-Mortem Prices June 2023

Prices are exclusive of VAT. Charity No SC004401

POST-MORTEM EXAMINATION

Each post-mortem examination includes the gross post mortem examination and histopathology. Additional slides, special stains, and IHCs will be charged as above. Unless undergoing private cremation, animals will be charged additionally for disposal (see below).

Rodent (mouse, rat, hamster, guinea pig, gerbil)	£70.00
Poultry, Rabbit, Bird	£80.00
Exotic Species (reptiles), Fish, Ferret	£120.00
Canine / Feline neonatal death (up to 3 weeks, please state DOB on submission form: virology and bacteriology included) - up to 2 pups / kittens	£150.00
Canine / Feline neonatal death (up to 3 weeks, please state DOB on submission form: virology and bacteriology included) - more than 2 pups / kittens	£210.00
Cat	£250.00
Dog	£280.00
Sheep, Goat, Pig, Camelid	£150.00
Cattle	£250.00
Equine Abortion Package (up to 1 day old, please state DOB on submission form). Submit foetus and whole placenta (when available). Select virology and bacteriology included.	£260.00
Horse	£400.00
Complete examination of spinal cord	£150.00 extra
Legal cases	£250.00 extra
Court appearances and preparation	£160.00 / hour

DISPOSAL CHARGES

All animals received into the post-mortem room will be charged for disposal, regardless of whether a post-mortem examination is performed unless and private cremation is arranged with the submitting veterinary practice/hospital.

1kg to 6 kg	£30.00
6kg to 30kg	£60.00
30kg to 100kg	£85.00
100kg to 200kg	£120.00
Greater than 200kg	£200.00

Tel: +44 (0)141 330 5777 | **Website:** www.gla.ac.uk/vds

Email: vds@glasgow.ac.uk

Veterinary Diagnostic Services

Histology Processing Prices June 2023

Histology Research Service

Prices are exclusive of VAT. Charity No SC004401

HISTOLOGY PROCESSING	Per Slide/Block
Processing to Paraffin Block and Produce Haematoxylin & Eosin Stained Slide	£10.00
Processing to Paraffin Block and Unstained Slide	£8.00* / £9.00 [‡]
Processing to Paraffin Block	£6.00
Processing to Paraffin Block and Special Stain (Standard / Complex)	£15.00 / 18.50
Prepare Unstained Slide	£4.00* / £5.00 [‡]
Prepare Slide and Stain with Haematoxylin & Eosin	£6.00
Prepare Slide and Stain with Standard Special Stain	£10.50
Prepare Slide and Stain with Complex Special Stain	£14.50
Paraffin Scroll for Polymerase Chain Reaction	£5.00

Depending on tissue type and size we may be able to produce blocks with multiple tissues embedded. *2-3 sections per slide, per block depending on sample size. [‡]Please contact the lab for details.

Please contact the lab with any specific questions.

IMMUNOHISTOCHEMISTRY (IHC)	Per Antibody
Prepare Slide and Stain with Antibody provided by VDS	£19.00
Prepare Slide and Stain with Antibody supplied to us	£16.50
Prepare Unstained Slide for IHC / IF (Antigen Retrieval can be performed in our lab)	£4.00* / £5.00 [‡]
New Antibody Optimisation	£160.00

We offer a specialised immunohistochemistry service for research including optimisation of custom antibodies. We are continually updating our range of antibodies. Please contact us to discuss your specific requirements.

DIGITAL WHOLE SLIDE SCANNING	Per Slide
Whole Slide Scanning at x20 Magnification	£2.00
Whole Slide Scanning at x40 Magnification	£3.00
Whole Slide Scanning at x80 Magnification	£5.00

We offer a whole slide scanning service at a magnification to suit your needs.

We use a MoticEasyScan Infinity for slide scanning, producing a SVS file type which is compatible with Aperio ImageScope, (Windows compatible only) & QuPath for Mac users to view and annotate slides.

Scanned slide files can be sent via our University File Transfer System, One Drive or copied onto a client-provided External HDD.

Tel: +44 (0)141 330 6933 | **Website:** www.gla.ac.uk/histology

Email: vet-histology@glasgow.ac.uk

Veterinary Diagnostic Services**Contact Details**

Prices are exclusive of VAT. Charity No SC004401

TELEPHONE

General Enquiries	+44 (0)141 330 5777
Clinical Pathology	+44 (0)141 330 5777 / 6915
Infectious Diseases	+44 (0)141 330 5777
Histopathology / Biopsy Service	+44 (0)141 330 5777
Post Mortem Service	+44 (0)141 330 5777
Histopathology Research Service	+44 (0)141 330 6933

EMAIL

General Enquiries	vds@glasgow.ac.uk
Clinical Pathology (General and clinical enquiries)	vet-clinpath@glasgow.ac.uk
Infectious Disease (Clinical enquiries only)	vet-id@glasgow.ac.uk
Histopathology / Biopsy Service	vds@glasgow.ac.uk
Post Mortem Service	vet-pathology@glasgow.ac.uk
Histopathology Research Service	vet-histology@glasgow.ac.uk

POSTAL ADDRESS**Veterinary Diagnostic Services**

School of Biodiversity, One Health & Veterinary Medicine,
College of Medical, Veterinary and Life Sciences,
University of Glasgow,
Bearsden Road,
Glasgow,
G61 1QH
United Kingdom