



# A SECONDARY SCHOOL EXPERIENCE

---





# IDENTIFICATION

---

- **Transition** from Primary School to Secondary School at 11/12 years old
- **Confidential** information – contains information relating to ASN Act
- **Pastoral notes**...more holistic view of learner including circumstances
- **Revolving door policy**....yearly review of information year on year



# CURRICULAR DRIVERS: A CURRICULUM FOR EXCELLENCE

---

- BLOOM'S REVISED TAXONOMY
- DWECK'S INCREMENTAL INTELLIGENCE
- GARDNER'S MULTIPLE INTELLIGENCE



# INCLUSIVE APPROACHES

---

- DIFFERENTIATION
- CHALLENGE
- CREATIVE THINKING
- METACOGNITION
- INTERDISCIPLINARY LEARNING with HIGHER ORDER THINKING SKILLS



## HOW CAN IT WORK? AN EXAMPLE OF METACOGNITION AND CREATIVE THINKING FOR BGE

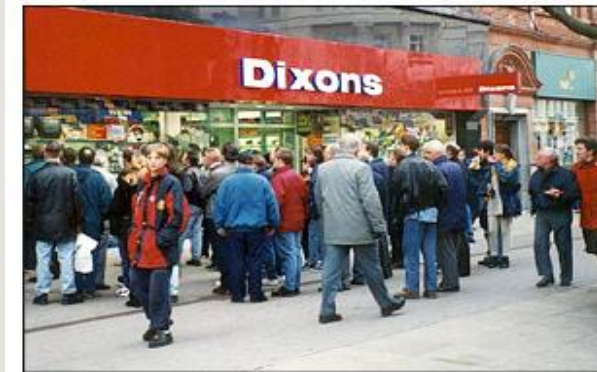
---

- Identify 3 things you have learned from today (metacognition)
- Identify 2 ways in which your learning could improve (target setting for lifelong learning)
- Creative plenary – using a selection of pictures, learners are asked how they would connect one or more pictures to what they have learned



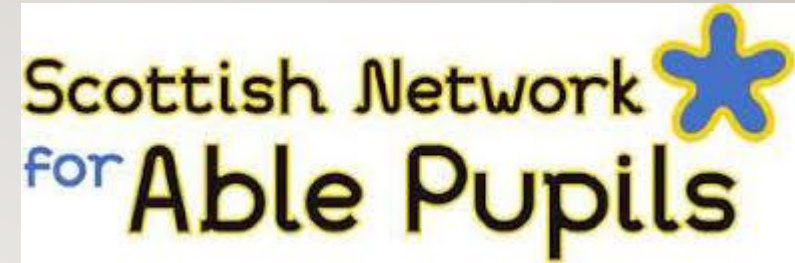
HOW MIGHT YOU CONNECT ONE OR MORE OF THESE PICTURES TO WHAT WE HAVE LEARNT TODAY?

---



# LINKS TO SNAP

---



Pupils given opportunities to link with Scottish Network for Able Pupils where and when appropriate/available (University of Glasgow)

CPD been offered to staff by SNAP

Maths department have links with Strathclyde University for master classes for pupils

Languages department have Confucius element and opportunities for pupils to achieve year long scholarship in China.

# SALAMANCA

---

- Salamanca Statements (UN, 1994)
- ASL Act
- Getting It Right For Every Child
- Pupil Equity Fund
- SAC



