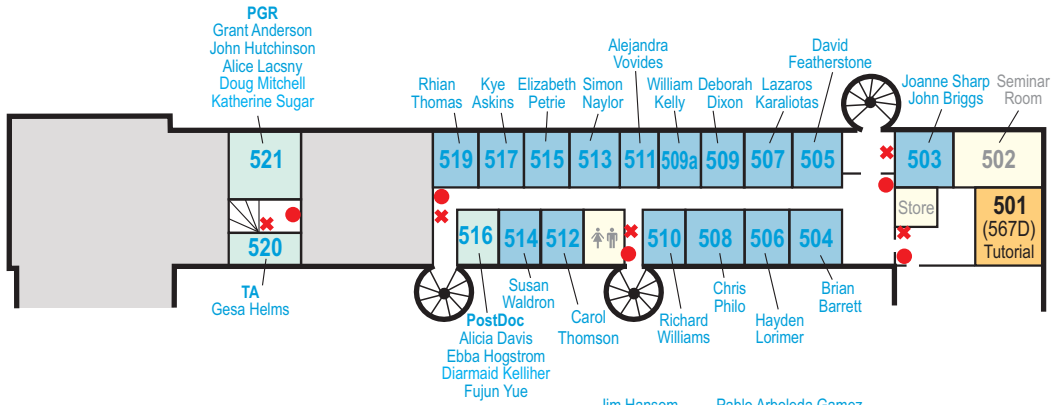
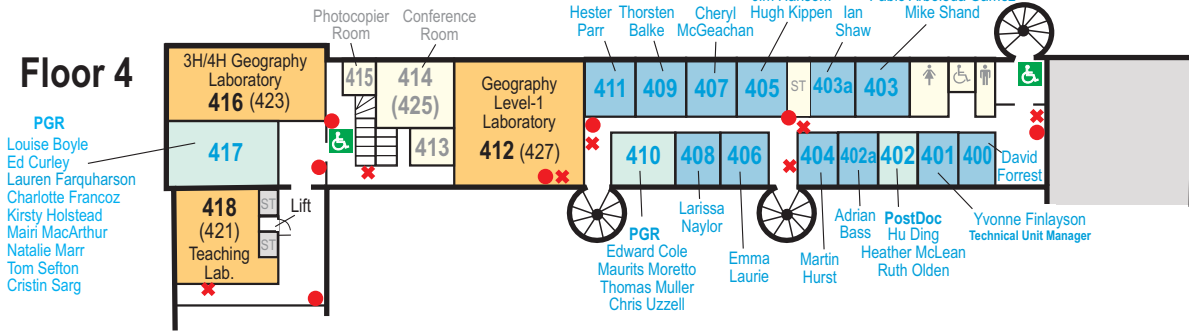


GEOGRAPHICAL & EARTH SCIENCES - East Quad.

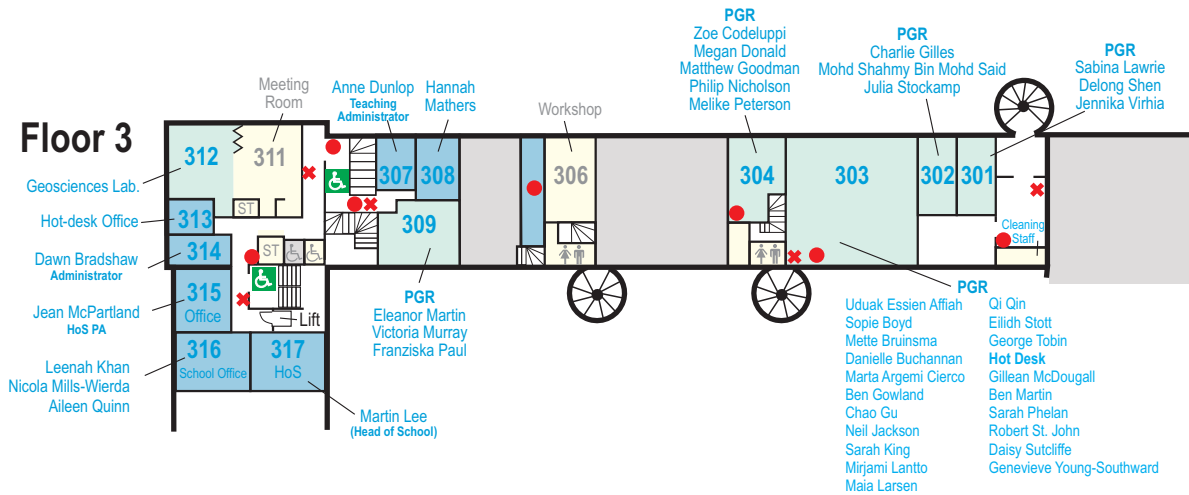
Floor 5



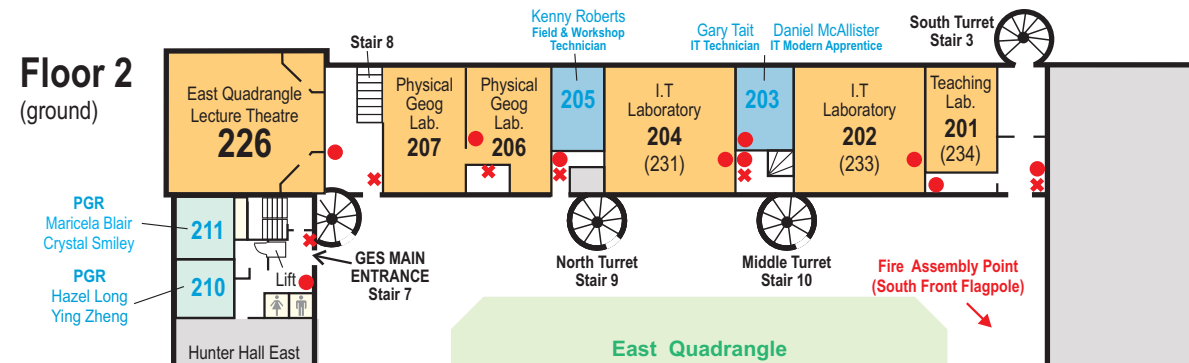
Floor 4



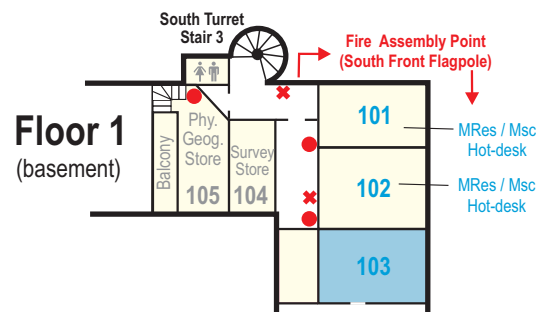
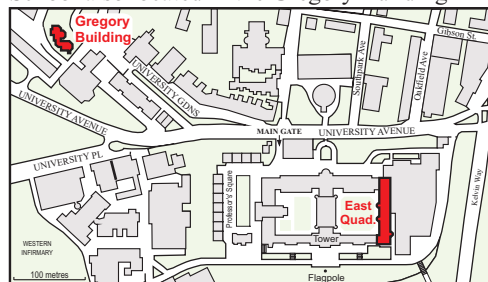
Floor 3



Floor 2 (ground)



School also located in the Gregory Building



- Refuge point
- Fire Alarm
- Fire Extinguishers
- Teaching Rooms
- Staff Offices
- Research Staff and Student Offices
- Other Rooms