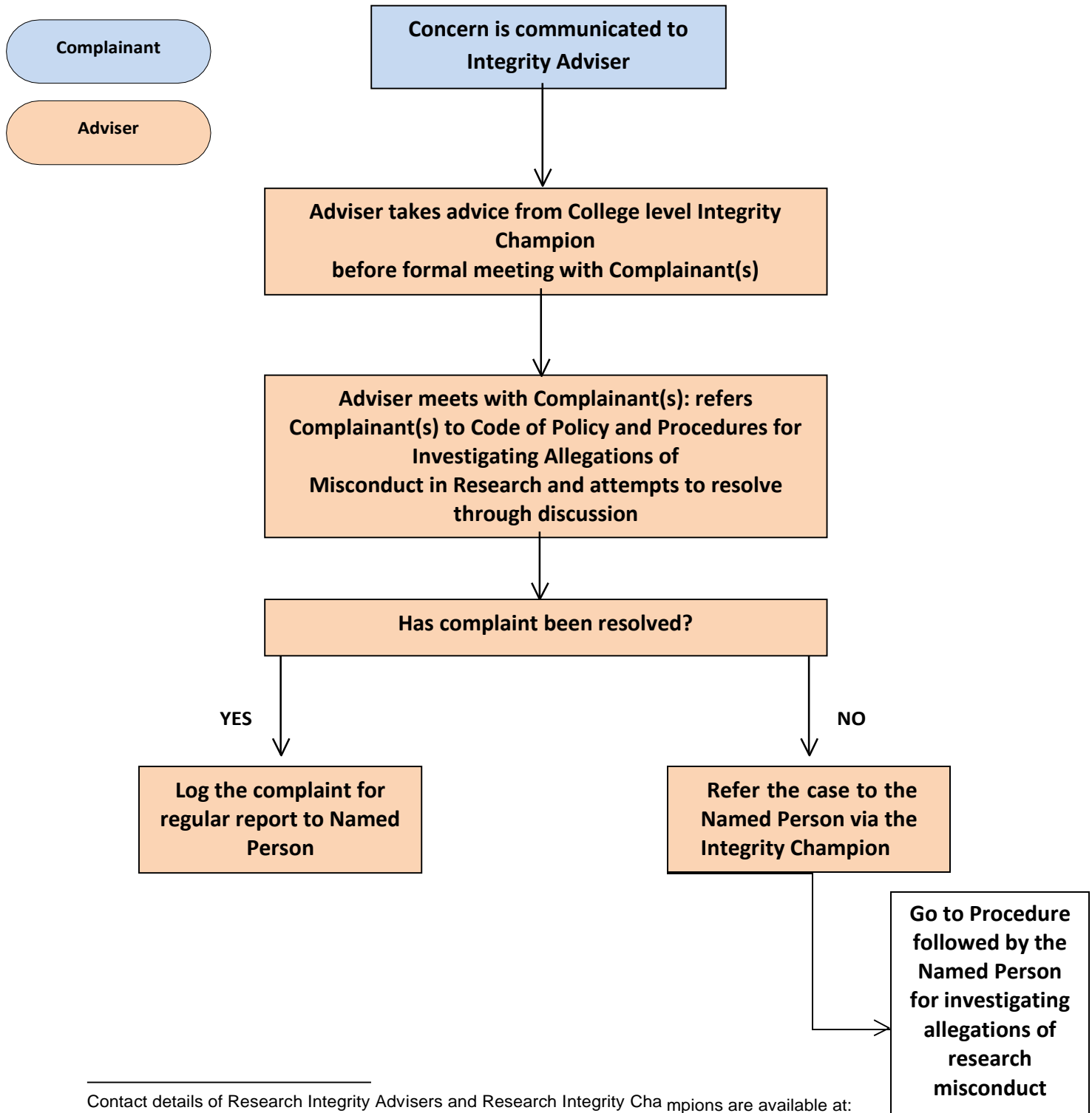


# ***Procedure followed by the School / Research Institute / College for Investigating Allegations of Research Misconduct***



Contact details of Research Integrity Advisers and Research Integrity Champions are available at: <http://www.gla.ac.uk/services/ris/researchstrategy/policies/researchintegrity/advisors/>

UoG Policies relating to Good Practice in Research, Misconduct investigation, and Research Data Management: <https://www.gla.ac.uk/research/strategy/ourpolicies/>