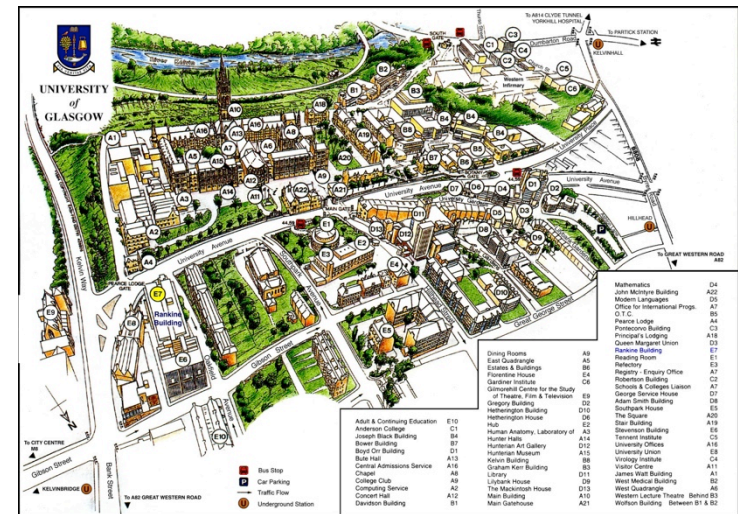




University of Glasgow



Bowdler
Project Management

University Services

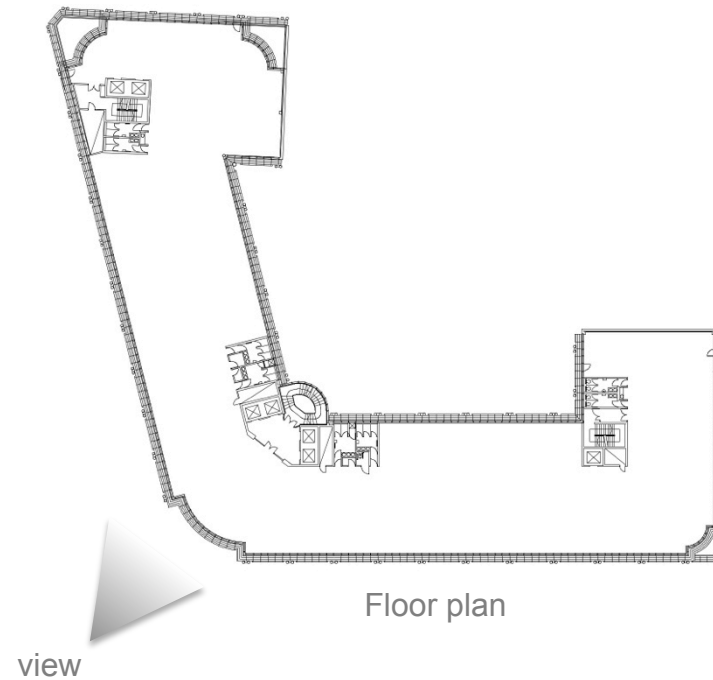
staff presentation

The Project

Relocate circa 228 University Services dept. staff from the Gilmorehill campus to office space on the 6th floor, Tay House, 300 Bath Street.



Tay House



Floor plan

Office space

- Open plan design principles
- Create shared central multi-function meeting / training / social space
- Desk layout and dept. locations based on balance between security / confidentiality and create space that will encourage interaction between teams / dept.'s as much as possible
- Small hot desking provision for visitors
- Bench style desking –1.4m desks with central low level divider
- Ergonomic furniture / Equality Act 2010
- Kitchenette / tea prep areas
- Staff showers

Manager's spaces

- range of design solutions
- Work in open plan, semi-private and office pods

Meeting Spaces

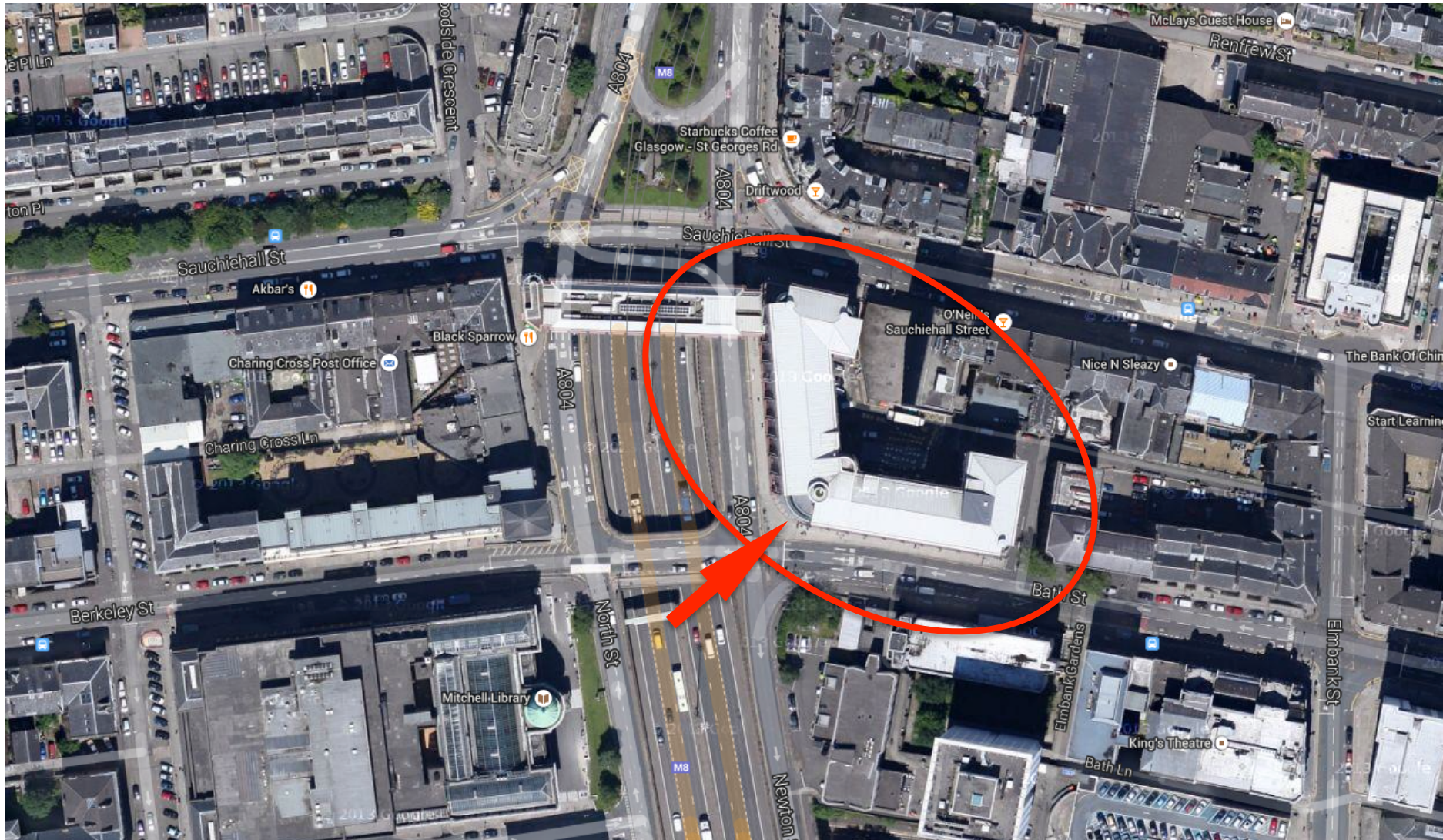
- Create range of different sizes and types (formal / informal) spread through space
 - Central training suite with flexible layout (12 to 20 person)
 - Smaller enclosed meeting rooms (6 – 8 person)
 - 4 person semi-private meeting pods
 - 4 person informal breakout spaces
 - Meeting room booking policy to be agreed through staff engagement

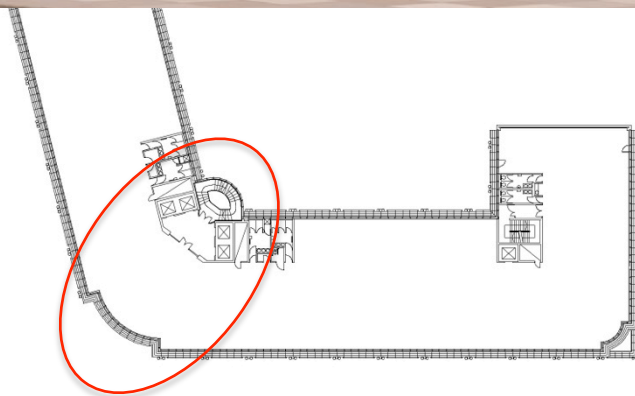
Storage

- Reduce all paper filing to minimum needed for daily use – consider off site or digital archiving solutions
- 1 pedestal / person standard
- Shared stationary & postal functions

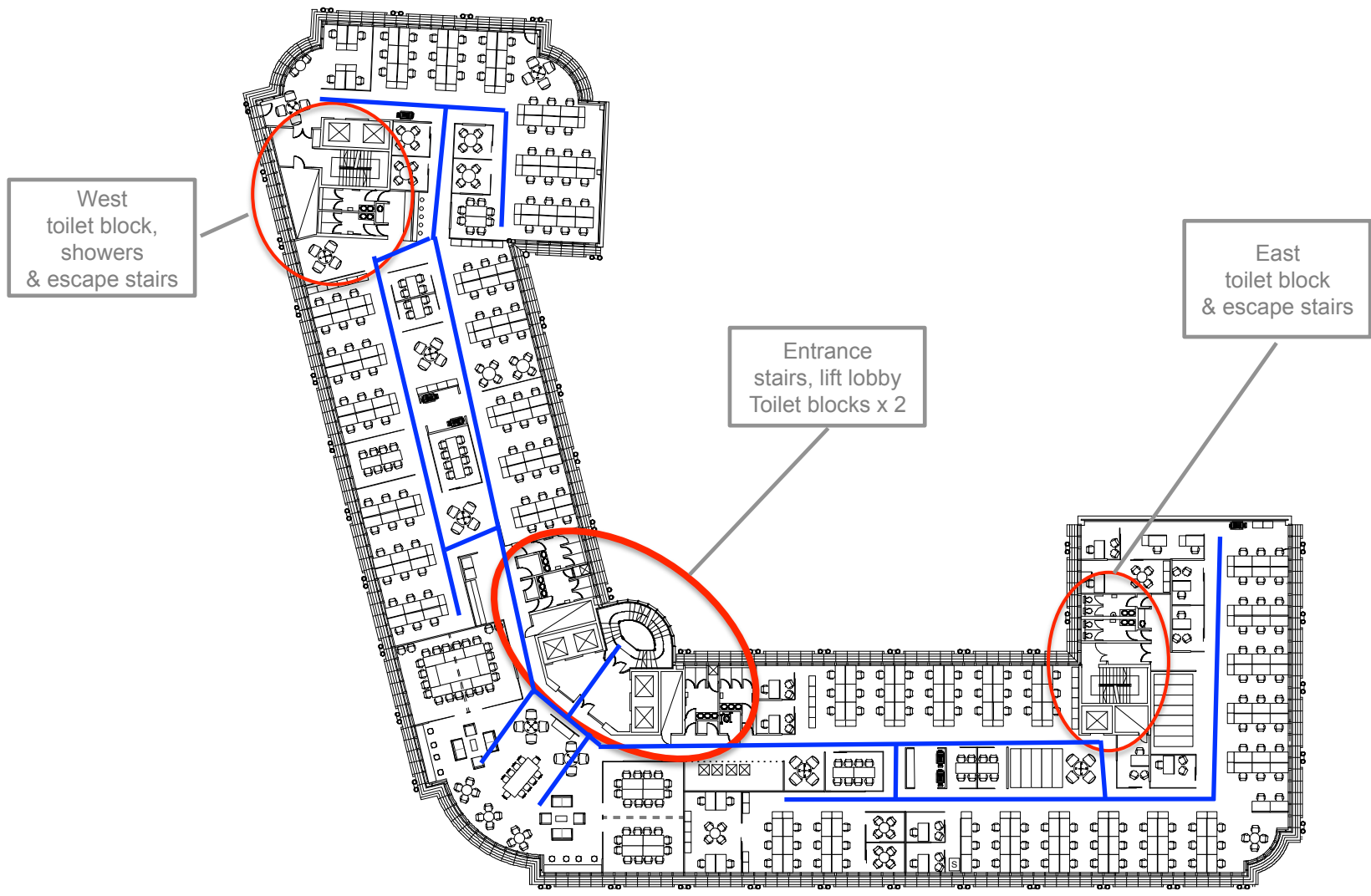








Fully refurbished entrance area off Bath street. Disabled access. Manned reception counter. Access controlled turnstile entry system





6th floor unique panoramic views to south, west and north

