



University
of Glasgow



Glasgow Changing Futures

Collaborative Seed Fund Launch

28 April 2026



Welcome

Today's presenters:

Chris Pearce, VP Research and SMG Sponsor for Glasgow Changing Futures

GCF Collaborative Leadership

- Jaime Toney, Academic Lead for Sustainable Futures
- Petra Meier, Academic Lead for Healthy and Equitable Futures
- Maria McPhillips, Professional Services Lead, Collaborative Futures

GCF Team

- Emma Read Kallblad, Senior Programme Manager for Glasgow Changing Futures
- Craig McLenaghan, GCF Coordinator (seed funds manager)



AGENDA

1. Introduction to Glasgow Changing Futures (GCF)
2. Introduction to the aims of the GCF Collaborative Seed Fund call
3. The GCF Areas within the Call
 - Sustainable Futures
 - Healthy and Equitable Futures
 - Collaborative Futures
4. What's Next
5. Q&A



FOR THE
WORLD

By fostering collaborative partnerships, GCF reimagines how universities generate, mobilise and share knowledge, shaping agile and inclusive systems to advance the wellbeing of people and the planet.

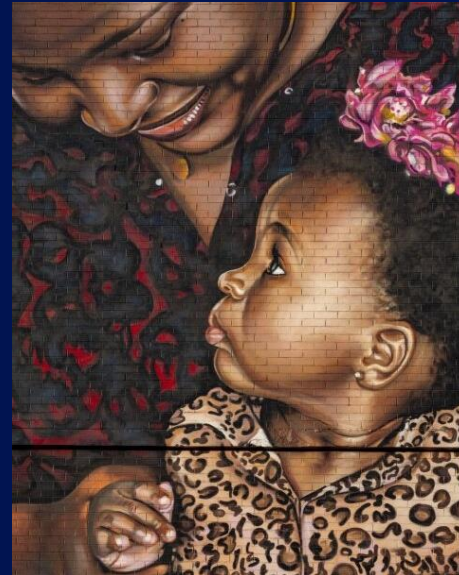


Sustainable Futures



Responding to the complex challenges created by our changing climate.

Healthy & Equitable Futures



Working to achieve health equity for people locally, nationally and globally.

Collaborative Futures



Securing a strong future for challenge-led collaboration.



University
of Glasgow



Programme Board

Chris Pearce *VP Research*

Rachel Sandison

*Deputy VC, VP External
Relations-*

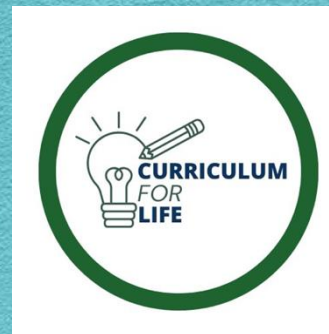
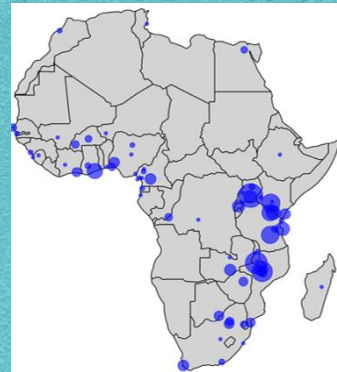
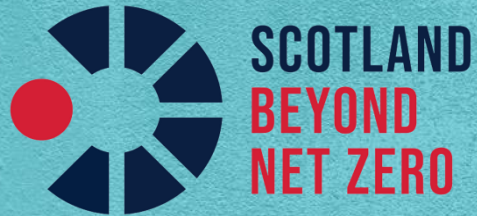
Moira Fischbacher-Smith *VP
Learning & Teaching*

Uzma Khan *VP Economic
Development*

Jo Gill *VP, Head of CoAH*

**Glasgow
Changing
Futures**

What we are co-delivering



**Glasgow
Changing
Futures**

UofG Joint Ventures

- ARC: Towards the University of the Future
- External Relations: Transformational Giving and 575
- Planning, Insights and Analytics: integrated view collaborative landscape
- Professional Services: Secondment Programme



University Strategy

Our Values: World-changing Glasgow

Our university in 2036:

- Large-scale, challenge-led projects aligned to the University's distinctive strengths...
- Turning our ideas into real-world solutions that benefit society ... and address major societal challenges.
- Our education portfolio ... better aligned to the needs of society.

Glasgow Changing Futures

Research Strategy 2026-2036

Purpose & Vision	Transforming lives through ideas and actions By collaborating, unlocking creativity and supporting our people and teams to succeed, we will <i>advance knowledge, address challenges</i> and <i>drive impact</i>		
Strategic Priorities	Collaboration Working together to tackle bigger challenges Creativity Unlocking great ideas Careers Helping each other to succeed	COLLABORATION Working together to tackle bigger challenges CREATIVITY Unlocking great ideas CAREERS Helping each other to succeed	
Guiding Principles	1. We value research quality over quantity 2. How we do our research matters 3. Our success depends on the success and resolve of our people and our teams		
Strategic Drivers	Communities & Context Advancing equitable, context-driven research Impact & Influence Driving impact and shaping the landscape	Vitality A dynamic, sustainable & intellectually vibrant research environment	Alignment & Integration Aligning systems & structures and connecting across the University Teams & Partnerships Working collaboratively and building partnerships with purpose



University
of Glasgow

Collaborative Seed Funds

**Glasgow
Changing
Futures**



University
of Glasgow

The GCF Collaborative Seed Fund supports new teams at the University of Glasgow who combine diverse fields to co-design and co-produce solutions that take a systems, future-orientated perspective to local, national, and global challenges.

**Glasgow
Changing
Futures**



CORE Criteria

Proposals should demonstrate that they are:

1. Challenge-led, solutions-focused and futures thinking
2. Collaboration across boundaries
3. Application quality, credibility and strategic fit
4. Potential for progression and follow-on funding



Scope of activity: The fund will primarily support research-focused activity; however, we will consider non-research proposals where there is a strong case for their impact on the University's capability to address challenges.

External Partnerships: We welcome projects that include existing external partnerships or create new ones where this adds value to the proposed activity. However, the inclusion of external collaborators is not a requirement.



Awards

Collaborative Seed Fund (Open Call)

Award sizes and indicative number of awards:

Sustainable Futures: £5,000 awards, with approximately 6 awards expected

Healthy and Equitable Futures: £5,000 and £15,000 awards, with approximately 4 to 10 awards expected

Collaborative Futures: £5,000 and £15,000 awards, with approximately 4 to 10 awards expected



University
of Glasgow

The GCF Areas

**Glasgow
Changing
Futures**



University
of Glasgow

Sustainable Futures

Meeting the social foundations of current and future generations while living responsibly within a healthy, natural environment.

Engaging with complexity for transformative change that bridges place-based action to global outcomes.

**Glasgow
Changing
Futures**





Sustainable Futures: Portfolio Overview

Glasgow
Changing
Futures

**Network-based
Approaches**

e.g., Scotland
Beyond Net Zero,
U21 Nature Positive
Coalition

**Solution-
focused
Dialogue
Processes**

Insights into
complex challenges,
deepening strategic
partnerships and
civic alliances

**Scaffolding
Innovative
Propositions**

Incubate promising
ideas through to
delivery

**Building
Capacity &
Leadership for
Change-making**

Providing time,
opportunities, and
support for our
future change-
makers

**Creating a
Culture of
Futures
Thinking**

A safe space for
critical & creative
thought leadership, a
conduit for scalable
opportunities.

Exploring the types of proposal ideas in the Sustainable Futures area

Sustainable Futures is looking for impactful projects that:

1. Demonstrate genuine collaboration in responding to challenges created by a changing climate.
2. Approach challenges with awareness of the interconnections across natural, social and cultural systems.
3. Articulate the relevance of the project in the context of current societal needs while considering longer-term outcomes.

**Glasgow
Changing
Futures**

Projects could include, but not limited to...



Future seed funding opportunities in the Sustainable Futures area

Sustainable Glasgow Dialogues – funding development

1. Bridging the gap to net zero: opportunities for sequestration in Scotland
2. Normalising the Circular Economy – what’s stopping us?
3. Holistic place-based and nature positive solutions for climate resilience
4. Building purposeful partnerships for an equitable & scalable energy transition

Responsive-mode Funding – Academic Year 2026-27

Smaller awards (<£1.5k) to support internal activities that help to deliver the Sustainable Futures vision

Scotland Beyond Net Zero – Annual Seed Fund early 2027

designed to spark potentially high-impact research which has been co-created with business, industry, government and communities in support of Scotland’s ambitious net zero and just transition goals.



And beyond seed funding – further ways to engage

Reach out and tell us about your work!!

Contact Sustainable Futures team to connect:



Jaime
Toney

João Porto de
Albuquerque

Jill
Robbie

Mo
Hume

Nicola
Smock

**Glasgow
Changing
Futures**

Sustainable Glasgow Dialogues process:

Collectively explore some of Glasgow's most pressing challenges while:

- Shaping the solution space
- Developing genuine collaborations with policymakers and key industries
- Becoming part of wider projects and potential funding proposals

Scotland Beyond Net Zero

- *SBNZ Research Toolkit - Identify how your research contributes to knowledge and innovation on sustainability*
- Sign up for SBNZ newsletter and events:
 - <https://scotland-beyond-net-zero.ac.uk>



University
of Glasgow

Healthy & Equitable Futures

A future in which all people have equitable opportunities to live long, healthy and fulfilling lives - physically, mentally and socially - within a healthy natural environment and with explicit regard for future generations.

**Glasgow
Changing
Futures**





What are some of the key challenges for a Healthy & Equitable Future?

In surveys of what matters to people, their own and family members' health often ranks top.

Stark health inequalities in the UK and globally are costly – not just to individuals, but to societal progress.

New, compounding risks – including climate crisis, technological advances, geopolitical instability – may make equitable health futures less likely.

Traditional approaches to evidence struggle to respond to fast-paced societal change and to generate systemic solutions.



HEF operates at the intersection of three imperatives

Convening – for Co-
created Solutions

Leveraging the University's legitimacy to foster equitable, non-extractive collaboration across disciplines, sectors and communities

Future Orientation –
for Anticipatory
Solutions

Strengthen anticipatory thinking, horizon scanning and foresight capabilities, so UofG intentionally shapes pathways to healthy, fair, sustainable systems and practices.

Evidence Integration
- for
Actionable Solutions

Strengthening coherence and actionability by developing methods / platforms that reduce fragmentation and integrate insights across knowledge systems



Exploring the types of proposal ideas in the Healthy and Equitable Futures area

HEF seed funding provides **early-stage investment** to develop or test novel, potentially high-profile *research, education or innovation* ideas with clear relevance to the Healthy & Equitable Future challenge.

In particular, HEF will support bid development for substantive research, education or innovation programmes that will **generate or integrate knowledge, methods and/or theoretical perspectives in new ways**. Intended uses of the seed fund include preparatory work to strengthen bids to research, public sector, private sector or philanthropic funders e.g. sandpits, partnership development activities, road-testing of ideas with beneficiaries or end users, and/or producing initial data or scoping work.

We expect most seed funding applications to be research focused. However, bids in further areas e.g. for **high-profile educational proposals** are also encouraged (for example, preparatory work for a partnership bid for a HEF-relevant Erasmus+ joint masters programme).





Future seed funding opportunities in the Healthy and Equitable Futures area

1. OPEN NOW: HEF Catalyst Phase 3 funding (microfunding £2k, sprint funding £5-15k) – for those who are signed up to any of the Phase 3 workshops.

~~**15th of April – Democratic Power & Institutional Legitimacy Systems**~~

~~Designing how authority, capital, and representation are structured in healthy and equitable futures~~

~~**24th of April – Provision Systems (Life Infrastructure)**~~

~~Designing the physical and environmental systems that shape health, equity, and everyday life~~

1st of May – Reflexive, Participatory & Knowledge Infrastructures

Designing the listening, learning, and legitimacy systems required for participatory futures

14th of May – Human Capability Systems

Designing the human capabilities required to thrive in structurally unstable futures

21st of May – Collaborative Place & Community Systems

Designing the relational and civic infrastructures required for shared agency for change

29th of May – Cultural & Narrative Systems

Designing the meaning-making infrastructures that grant or withhold cultural permission

2. Early next year (TBC): Project funding for **evidence integration in key areas where UofG has strong, but siloed, activity**, and where novel integration could reveal new solution spaces.

<https://www.eventbrite.com/e/glasgow-changing-futures-healthy-equitable-futures-ideas-into-action-tickets-1984768382661w>



And beyond seed funding – further ways to engage

NOW: HEF Lead positions

- **Associate Lead (Research)**
- **Associate Lead (Strategic Partnerships & Impact)**
- **Associate Lead (Engagement)**

Postholders in these pan-university strategic roles will help shape and deliver a dynamic portfolio of activity that spans research activation, supporting team science, forging new collaborations and partnerships, and creating conditions for societal impact and engagement.

Interested senior colleagues (G9/G10) are welcome to get in touch with me (petra.meier@...).

Coming up:

We will be looking for HEF GCF Fellows – G7/8 staff interested in supporting a high-level summit/forum on Healthy & Equitable Futures



Collaborative Futures: Portfolio Approach

Secure a strong future for challenge-led collaboration aligned to our distinctive strengths



Foster future challenge-led activity



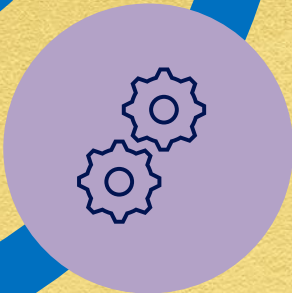
Explore, initiate, and scale cross-College collaboration, create a pipeline of challenge-led activity that bridges existing and emerging strengths



Understand what works to enable, scale and sustain collaboration



Shape the conditions that support collaboration, rehearse new ways of working through futures methods and strengthen interdisciplinary leadership capability



Build an integrated view of our challenge-led ecosystem



Drive cohesion and visibility for challenge-led activities, and inform efforts and investments to connect existing and emerging strengths



Exploring the types of proposal ideas in the Collaborative Futures area

Explore, initiate, & scale
cross-College
**challenge-led
collaborative activity**
beyond current GCF
Challenge Areas

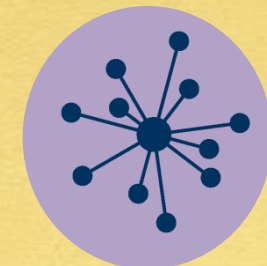
Challenge-focussed bids
targeting external funding calls
in the next 12-18 months

Bid
preparation

Underpin emerging
challenge-led
collaborative projects

Pilot
data

Team
formation



Foster future
challenge-led
activity



Future seed funding opportunities in the Collaborative Futures area

Pipeline of future challenge-led activity:

- Novel challenge-led thematic concepts
- Proposals aligned with cross-over thematic areas



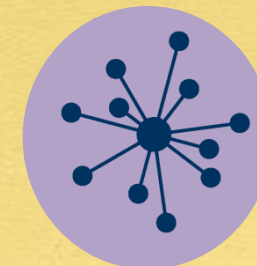
Co-developed with Colleges and informed by:

- analysis of internal collaboration activity
- alignment with College strengths and strategic priorities
- horizon scanning of external funding opportunities

Explore, initiate, & scale cross-College **challenge-led collaborative activity** beyond current GCF Challenge Areas

Emerging technologies:

- Trust, ethics, governance
- Social impact



Foster future challenge-led activity



And beyond seed funding – further ways to engage



Lisa Bradley
Senior Lecturer in Creative and Interdisciplinary Studies in

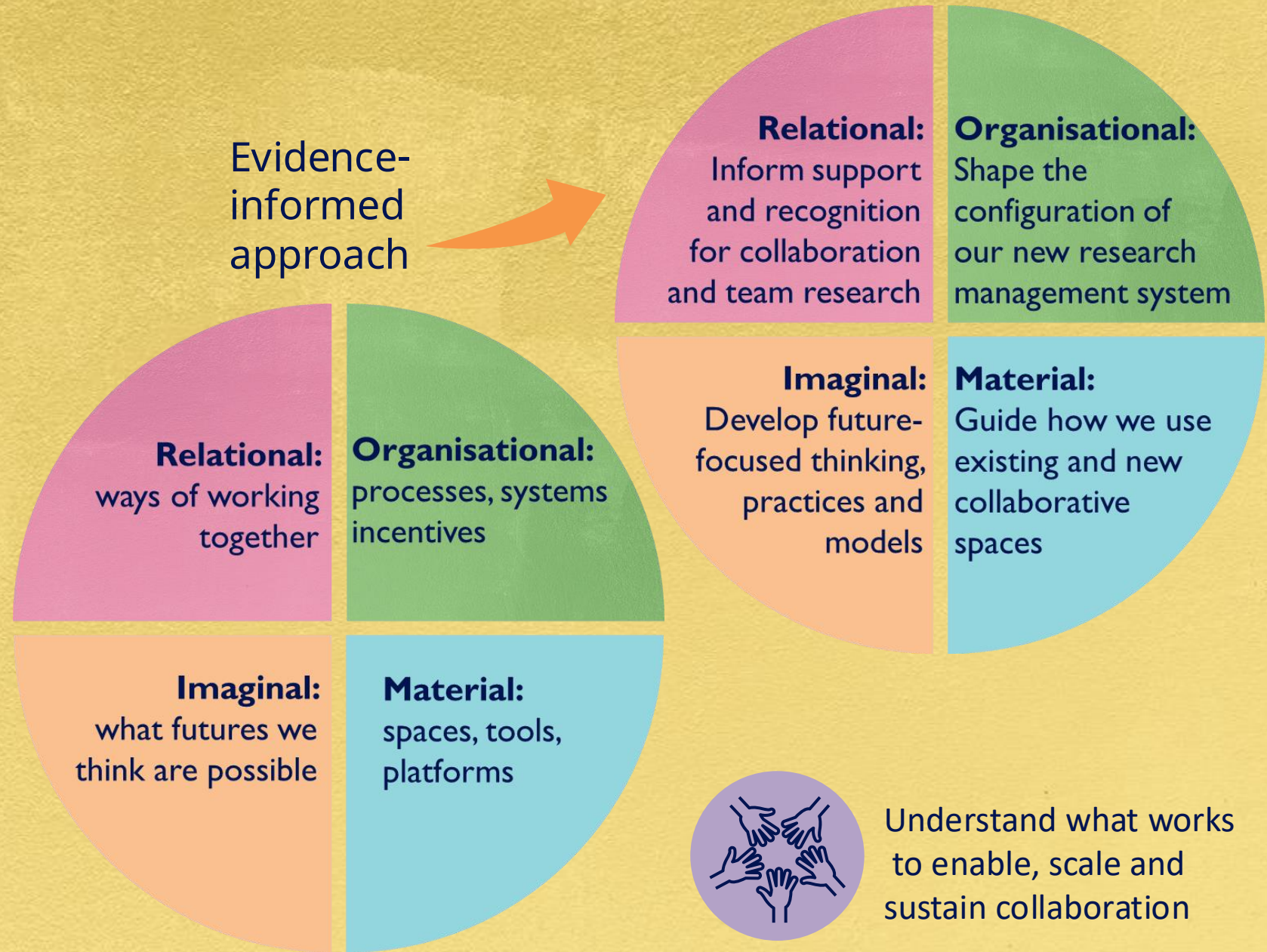
Towards the University of the Future

University-wide survey: attitudes, incentives, barriers, enablers, perceived value.

Interviews and focus groups: perceptions and experiences from across UofG

Glasgow Changing Futures

Evidence-informed approach



Understand what works to enable, scale and sustain collaboration



University
of Glasgow

What's next?

**Glasgow
Changing
Futures**



University
of Glasgow

Key Dates

Call Opens: Thursday 30 April 2026

Application Deadline: Wednesday 3 June 2026 at 12:00
midday

Review Period: June 2026

Decisions Communicated: by end of July 2026

Project Start: 1 October 2026

Project Delivery Period: funded activity should be
delivered **within Academic Year 2026-27** and unspent
funds will be returned to GCF after 31 July 2027.

**Glasgow
Changing
Futures**



Presentation
Title

31



University
of Glasgow

Applicant Support

Collaborative Seed Fund (Open Call)

**Glasgow
Changing
Futures**

Discover Glasgow Changing Futures (GCF) and the upcoming GCF Collaborative Seed Fund (Webinar): Tuesday 28 April 2026, 12:30pm to 2:00pm

Application Process Briefing Webinar:
Wednesday 29 April 2026, 12:30pm to 1:30pm

In-Person Application Clinic: Tuesday 19 May 2026, 11:00am to 4:00pm, ARC 224

FAQ on website & queries to
gcfseedfund@glasgow.ac.uk



University
of Glasgow

Q&A



University
of Glasgow

Thank you

**Glasgow
Changing
Futures**