



MVLS Student Voice

Clubs & Societies (Inclusive Events)

The positive impact of Clubs and Societies (C&S) was recognised by all students

100% students agree that joining clubs and societies is a great way to meet people.



Lack of awareness of MVLS specific C&S was highlighted by UG and PGT students

Most students were unaware of the MVLS specific C&S. Many students did not know that they can start their own C&S.

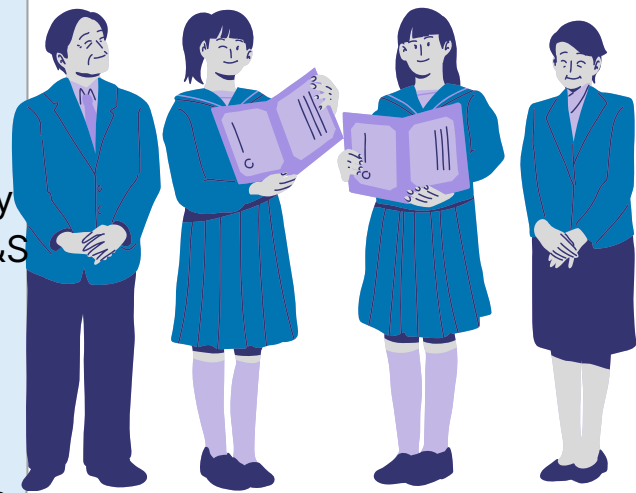
Suggestions: Enhanced promotion of MVLS specific C&S on social media & pop-up stalls;
Raising awareness by holding MVLS specific C&S fairs



PGT specific concerns

- Some students felt that C&S have a strong undergraduate focus.
- PGT students who start in January are unaware of MVLS specific C&S.
- The shorter duration of PGT courses may discourage engagement with existing C&S or starting new C&S

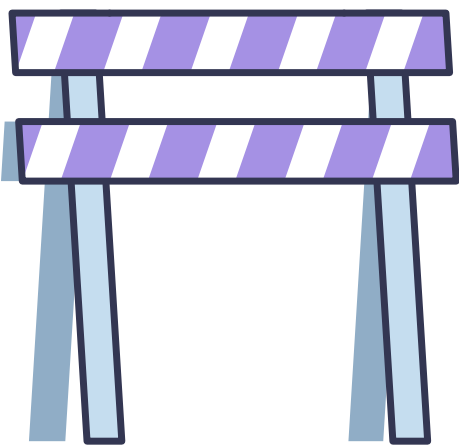
Suggestions: Raise awareness by holding MVLS specific C&S fairs in October and January; Promote MVLS C&S during lectures



Barriers to attending events

- Type of activity - pub events or those with alcohol
- Timing of activities - Evenings unsuitable for commuters and safety concerns if too late. Daytime events may clash with teaching events

Suggestions: Encourage societies to be inclusive when planning events. For daytime events, discuss with timetabling to find suitable venues.



MVLS-StudentVoice@glasgow.ac.uk
<https://www.gla.ac.uk/colleges/mvls/students/student-voice/>