



University
of Glasgow

Agile Workspace

Gilmorehill Campus

**WORLD
CHANGING
GLASGOW**

**A WORLD
TOP 100
UNIVERSITY**



Mazumdar Shaw Advanced Research Centre

Level 2 – Ground Floor

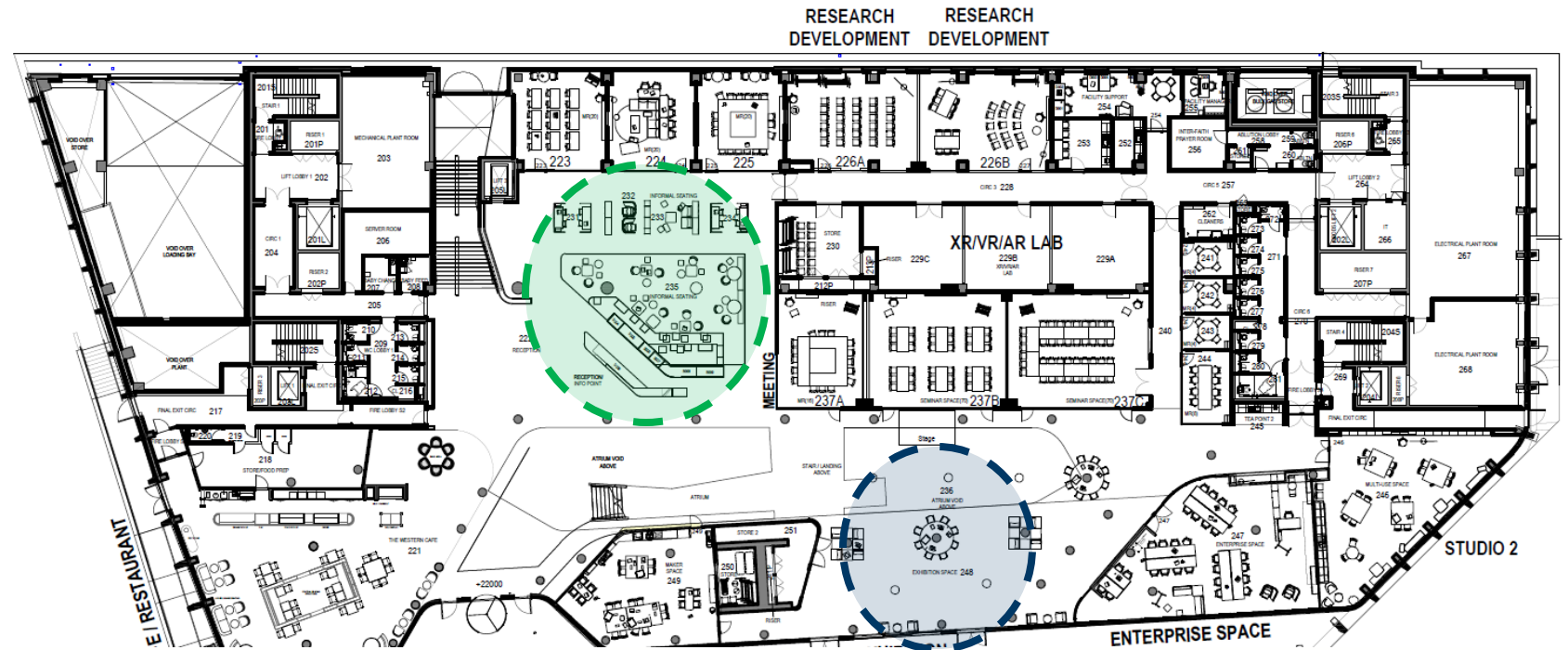
Touch down space is available on the ground floor of the building located behind the reception desk. This space is highlighted in green.

This space is available for use by any staff or students. It does not require key card access.

Facilities:

- Collaborative furniture
- Access to power
- Individual workspace
- Bar height desks

A secondary touch down space is available within the atrium of the building with desks available for short term use. This space is highlighted in blue.





University
of Glasgow

Mazumdar Shaw Advanced Research Centre

Level 3 – First Floor

Touchdown workspace is available on level 3-5 of the building. This is located near the main stairway on all levels.

There are security gates located at the top of the staircase from the ground floor which is accessible using a staff card.

Facilities:

- Access to power
- Breakout furniture

This space is highlighted in blue.





Clarice Pears

Level 1

Agile and touchdown space is available on the ground floor of the building. This space is accessible to staff and students. It does not require key card access. This space is highlighted in green.

This level also contains several meeting spaces that can be booked in advance by contacting shw-cp-reception@glasgow.ac.uk. These spaces are highlighted in blue.

Facilities:

- Standard workstations
- Access to power
- Collaborative furniture
- Booths
- Meeting rooms





University
of Glasgow

The New Adam Smith Business School

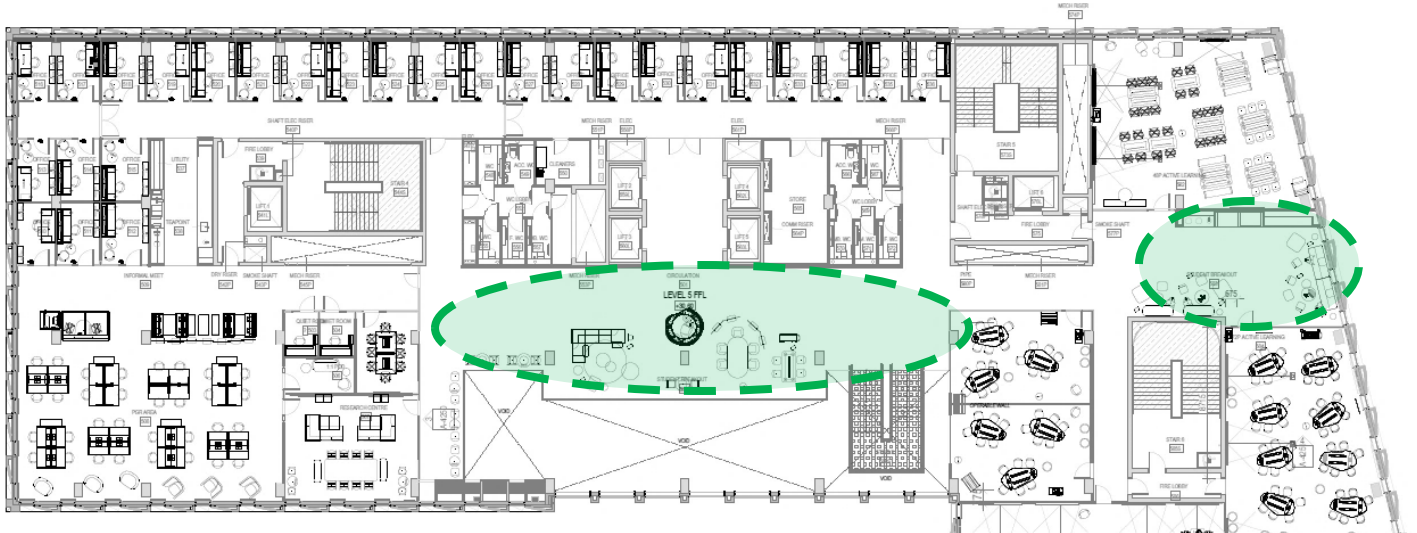
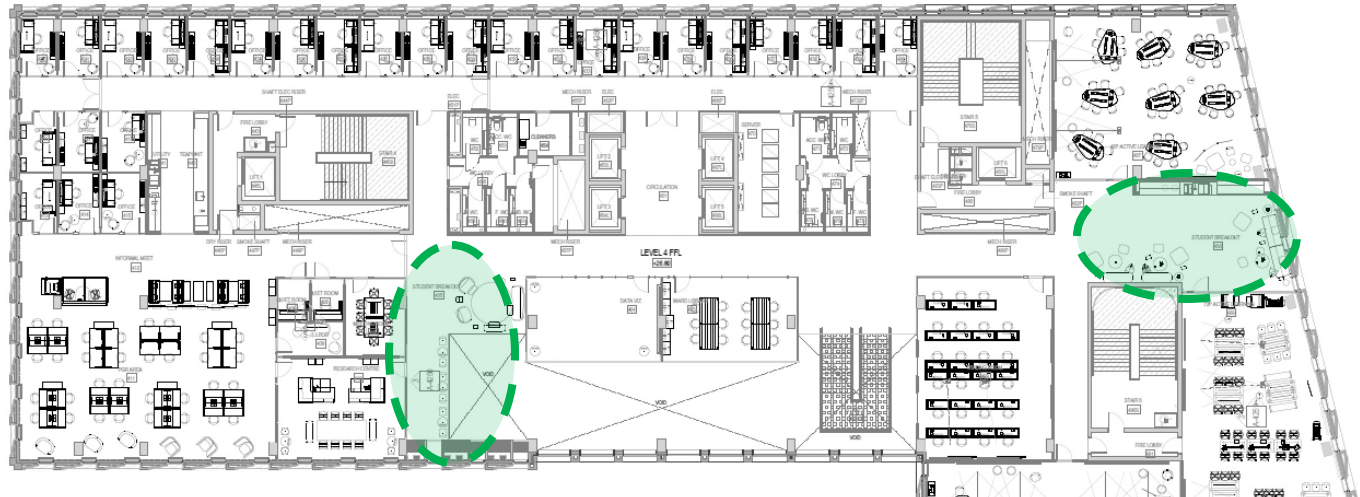
Level 4 & 5

Touchdown space is available on several levels within the building. These can be accessed via the main stairwell or the lifts.

This space is available for use by any staff or students. It does not require key card access.

Facilities:

- Bar height workstations
- Access to power
- Collaborative furniture
- Break out furniture





Fraser Building

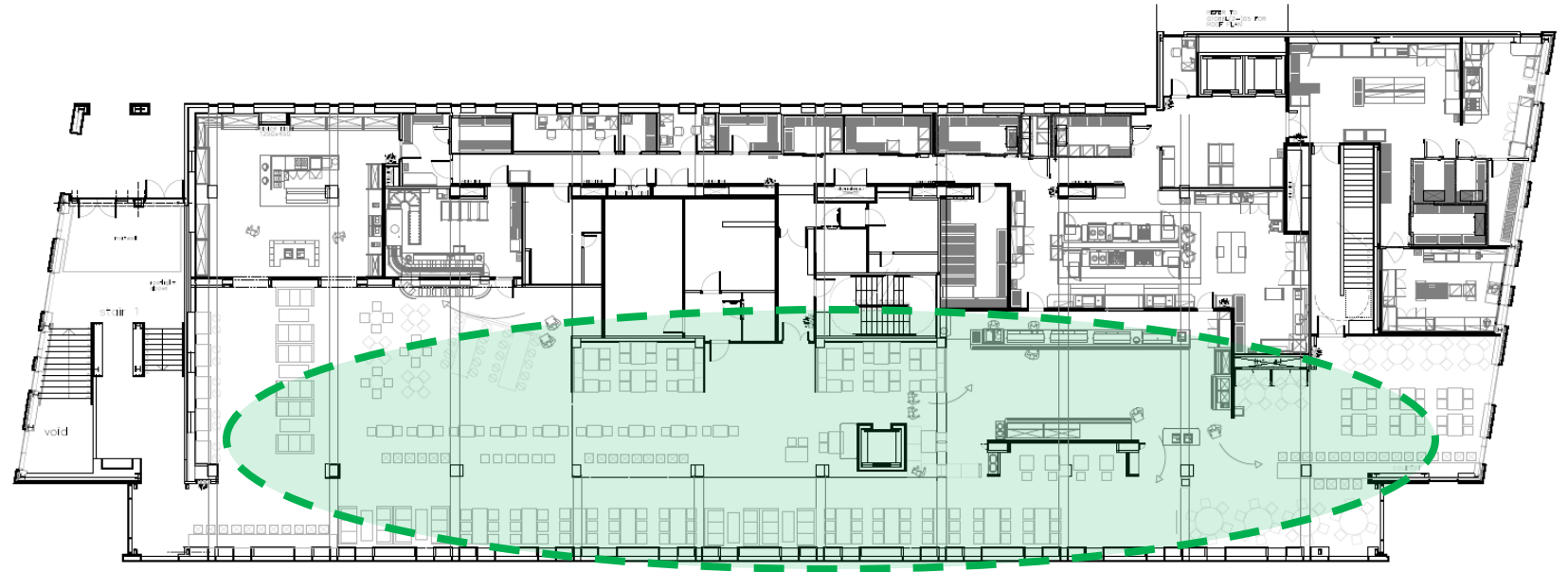
Level 3

Touchdown space is available on level 3 of the building. This can be accessed via the main stairwell or the lifts.

This space is available for use by any staff or students. As it is used as a student study space it can become very busy during semester. It does not require key card access.

Facilities:

- Bar height workstations
- Access to power
- Collaborative furniture
- Break out furniture





Additional Locations on Campus

The James McCune Smith Learning Hub

All levels are available to staff. Day lockers are available on the ground floor for storage of personal belongings.

The Library

All levels are available to staff. Booths can be booked via the booking system on the staff portal. As it is used as a student study space it can become very busy during semester.

Campus Cafes

- The Western Café located within the ARC can accommodate informal or lunch meetings if needed.
- The Gilchrest Café located within the Gilbert Scott Building offers booth seating, power provision and can act as additional touch down space if needed.
- The ASBS Tinderbox Café has power provision and can be used as a touchdown space if needed.





University
of Glasgow

New Bookable Meeting Room

Boyd Orr Meeting Room



Features

- Integrated equipment to facilitate hybrid meetings
- Capacity for 18 users
- Accessible meeting space
- Flexible furniture (flip-top tables and stacking chairs)
- Salto access