



Washer featuring exceptional savings and effortless use



Priority on people

Certified ergonomic design with a human-centered approach for an outstanding user experience

- ClarusVibe microprocessor and 7" color TS control: intuitive, fully editable programs, multi-language, on-screen statistics, fully controlling the detergent pumps
- Very easy connection to Electrolux pumps Jetsave and Dosave with one cable for power supply and one for dosing signals
- Simple connection to all generic pumps
- Connection to up to 15 pumps



Long-term savings

Innovative features designed for lowest possible water, energy and detergent consumption, to save money and time, and embrace a sustainable lifestyle

- Automatic Savings weighs the linen and adjusts the water level to the amount of linen, saving water and energy at less than full load
- Intelligent Dosing ensures that the precise amount of chemicals will be added automatically according to the weight of the load, saving chemicals
- Power Balance measures, corrects the unbalance and adjusts the G force in real time, maximizing the dewatering, saving money and time in the drying process



Pure control

Monitoring of the status of the equipment and performance from anywhere, allowing to take action to improve the business

- Washers connectable to OnE Laundry, the personal assistant for hygiene validation, process management and revenue management

Main options and accessories

- Front loaded detergent dispenser, positioned at ergonomic height for easy access, clear visibility; 6 color coded compartments make dosing easy and flexible with dedicated compartments for powder or liquid chemicals as well as bleach and softener; removable compartments ensure easy maintenance
- Integrated Savings is measuring the load in real time, ensuring optimization of the load and maximum productivity. IS provides also extended machine lifetime through the unique overload protection function, as machine will not start if overloaded; it will also reduce water and energy consumption at less than full load
- Dosave pumps (peristaltic) and Jetsave pumps (venturi) for less maintenance, precise and consistent dosage, easy installation and durable valves
- Connection to booking-/payment system or coin meter



Images shown are a representation of the product only and variations may occur.

Main specifications			WH6-14			
Max. capacity filling factor 1:9	kg/lb		14/30			
Drum, volume	litre		130			
diameter	ø mm		650			
Extraction	rpm		1115			
G-factor			450			
Standard heating alternatives	electricity	kW	13.0			
	steam		x			
	non-heated		x			
Consumption data "ECO 60°C"			EI		Steam***	
Total time	min		Full load, 14 kg	Half load**, 6.5 kg	Full load, 14 kg	Half load**, 6.5 kg
Water consumption (cold+hot)	litre		65	59	65	59
Energy consumption (motor/heating/hot water)	kWh		86+5	42+4	91+0	46+0
Steam consumption	kg		0.30/1.75/0.25	0.30/0.9/0.2	0.30	0.30
Residual moisture	%		-	-	3.0	1.65
			45	46	45	46

* Water temperature 15°C cold water and 65°C hot water.

** Programs with AS.

*** Depending on steam pressure.

Produced according to ISO 9001 and ISO 14001.

Certified with CB certificate for Low Voltage Directive and S-mark according to the Machinery Directive. Protection class IP X4D.

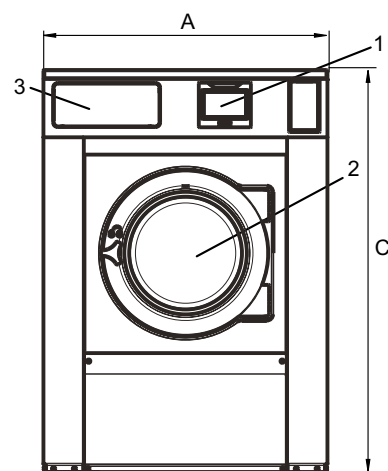
Electrical connections					
Heating alternative	Main voltage		Heating power kW	Total power kW	Recommended fuse A
		Hz			
Electric heated	220-240V 1/IN ~	50/60	4.8/13.0	5.2/13.4	25/63
	220-240V 3 ~	50/60	4.8/13.0	5.2/13.4	16/35
	380-415V 3N/3 ~	50/60	4.8/13.0	5.2/13.4	10/20
	440V 3 ~	50/60	13.0	13.4	20
	480V 3 ~	60	13.0	13.4	20
Steam or Non heated	220-480V 1 ~	50/60	-	1.2	10

* Total power and recommended fuse does not depend on the heating power in those cases.

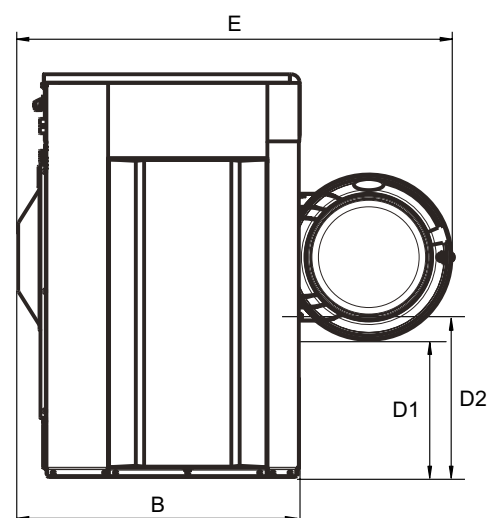
Water and steam connection		WH6-14
Water valves	DN	20
Water pressure	kPa	200-600
Capacity at 300 kPa	l/min	20
Drain valve	ø mm	75
Draining capacity	l/min	170
Steam valve	DN	15
Steam pressure	kPa	300-600
Liquid detergent supplies		5
Floor requirements		
Frequency of the dynamic force	Hz	18.6
Floor load at max extraction	kN	3.1 ± 0.5
Sound levels		
Sound power/pressure level at extraction*	dB(A)	78/62
Sound power/pressure level at wash*	dB(A)	63/48
Heat emission		
% of installed power, max		5
Shipping data**		
Weight	net, kg	263
Shipping volume	m ³	1.37
Accessories		
Steel base		x
Hose kits for water or steam		x
Fluff collector		x
Dimensions in mm		
A Width		910
B Depth		821
C Height		1326
D1		430
D2		491
E		1339
F		1044
G		80
H		1243
I		382
J		302
K		1203
L		1123
M		358
N		99
O		303
P		342
Q		217
1 Display	7 Re-used water	
2 Door opening ø 395 mm	8 Drain valve	
3 Detergent box	9 Liquid detergent supply	
4 Cold water	10 Electrical connection	
5 Hot water	11 Steam connection	
6 Cold/Hot water		

* Sound power levels measured according to ISO 60704.

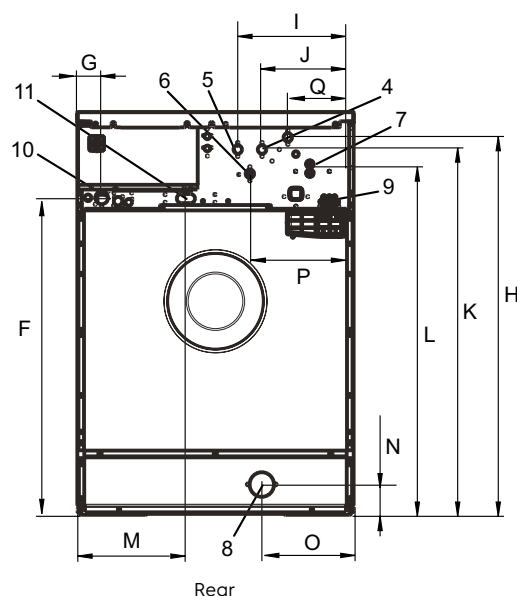
** Average data. Crated weight/shipping volume depends on configuration. Please contact logistics for exact measures.



Front



Side view



Rear

Tumble dryer

TD6-20



Dryer featuring exceptional savings and effortless use



Priority on people

Certified ergonomic design with a human-centered approach for an outstanding user experience

- Lint filter
The horizontal filter drawer is positioned for easy access and cleaning without the need to bend down



Long-term savings

Innovative features to save money and time, and embrace a sustainable lifestyle

- Moisture Balance (optional)
Helps to stop the drying process at the right time to save on energy costs



Pure control

Monitor your equipment and performance from anywhere, allowing to take action and to improve your business with OnE Laundry - the personal assistant for hygiene validation management, process management and revenue management (optional)



Outstanding productivity

Dry more laundry in less time: a game-changing improvement

- Reversing drum
Minimizes wrinkles and drying time to get an effective and even drying performance

Main options and accessories

- Insulated glass door keeps the door cool on the outside and heat on the inside, so the room temperature is not affected
- Lagoon Advanced Care
- Drum Speed Control adjusts the movement of the drum to help garments move correctly for a faster drying process
- Door, front and side panels are available in stainless steel
- Connectable to booking-/payment system or coin meter
- Adaptive Fan Control - The Adaptive Fan Control adjusts the fan speed automatically to keep air flowing efficiently which will save energy and help to optimize the drying time. (Only available on electric heated machines)



Images shown are a representation of the product only and variations may occur.
To get the door design you need to add the insulated glass.

Main specifications			TD6-20			
Rated capacity, filling factor 1:18	kg/lb		20.0/44.1			
	filling factor 1:22		16.4/36.2			
Drum volume	litre		360			
Drum diameter	mm		755			
Heating,	electric	kW	13.5/18.0			
	gas	BTU/h (kW)	71700 (21.0)			
	steam at 700 kPa		25.0			
Consumption data*			EI 13.5 kW	EI 18.0 kW	Gas	Steam
Total time full load	min		36	27	26	23
Energy consumption full load	kWh		8.2	8.2	9.3	9.9
Evaporation	g/min		228	302	321	352
Energy kWh/litre water evaporated	kWh/l		1.00	1.00	1.13	1.21

* At rated capacity 100% cotton load at 50% initial moisture dried to 0%.

Produced according to ISO 9001 and ISO 14001.

Certified with CB certificate for Low Voltage Directive and S-mark according to the Machinery Directive. Protection class IP X4D.

Electrical connections					
Heating alternative	Main voltage	Hz	Heating power kW	Total power kW	Recommended fuse A
Electric heated	220-230V 3 ~	50/60	13.5/18.0	14.5/19.0	50/50
	240V 3 ~	50/60	13.5/18.0	14.5/19.0	35/50
	380-415V 3N ~	50/60	13.5/18.0	14.5/19.0	25/35
	440V 3 ~	50/60	13.5/18.0	14.5/19.0	20/35
	480V 3 ~	60	13.5/18.0	14.5/19.0	20/25
Gas heated/	220-240V 3 ~	50/60	*	1.0	10
Steam heated	380-415V 3N ~	50/60	*	1.0	10
	440V 3 ~	50/60	*	1.0	10
	480V 3 ~	60	*	1.0	10

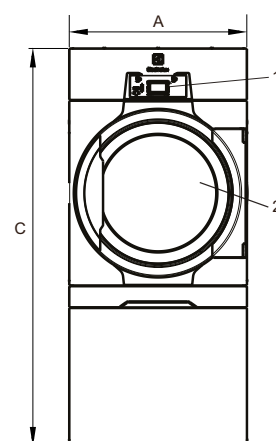
* Total power and recommended fuse does not depend on the heating power in those cases.

Steam, gas and air connections			TD6-20
Steam	ISO 7/1-R		1"
Steam pressure		kPa	100-1000
Steam consumption		kg/h	65
Condensate	ISO 7/1-R		1"
Gas	ISO 7/1-R		1/2"
Gas pressure			
	Natural gas	Pa	2000
		mbar	20
	Propane	Pa	2800-5000
		mbar	28-50
Air outlet		ø mm	200
Evacuated air,		m³/h	370
	el 13.5 kW		525
	el 18.0 kW		600
	gas 21.0 kW		690
	steam 25.0 kW		750
Pressure drop		Max. Pa	650
	el 13.5 kW		650
	el 18.0 kW		650
	gas 21.0 kW		650
	steam 25.0 kW		650
Sound levels			
Sound power/pressure level at drying*			
		dB(A)	72/56
Heat emission			
% of installed power, max			15
Shipping data**			
Weight		kg	243
Shipping volume		crated, m³	2.15
Dimensions in mm			
A	Width		790
B(a)	Depth, el and gas		1200
B(b)	Depth, steam		1340
C	Height		1770
D			775
E			835
F			750
G			110
H			60
I			270
J			240
K			175
L			605
M			740
N			395
1	Operating panel		
2	Door opening ø 580 mm		
3	Electrical connection on gas heated machines		
4	Gas connection/Electrical connection on electrical heated machines		
5	Exhaust connection		
6	Condensate connection		
7	Steam connection		

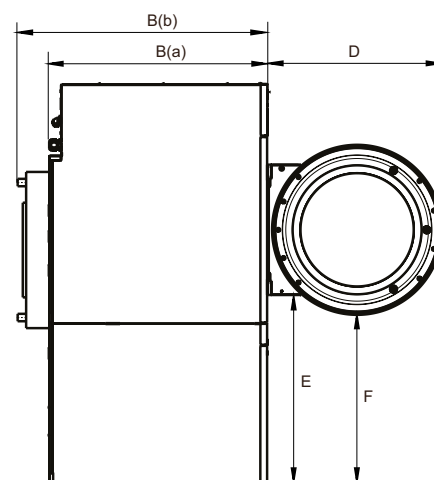
Front and side panels in silver grey and dark blue (color samples can be ordered on part number 472998313).

* Sound power levels measured according to ISO 60704.

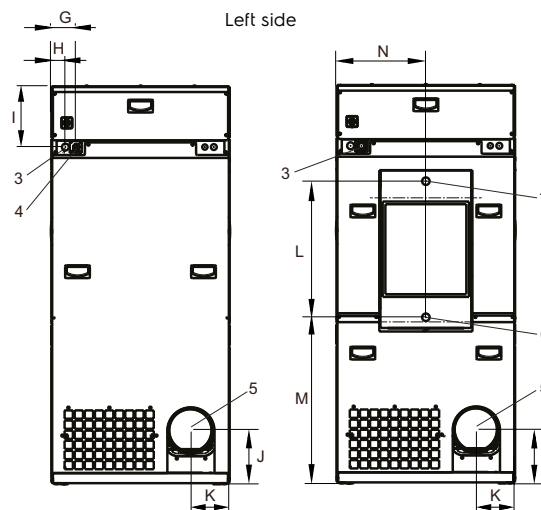
** Average data. Crated weight/shipping volume depends on configuration. Please contact logistics for exact measures.



Front



Left side



El, gas

Steam

Rear side