



# Glasgow Backcourt Recycling Guide





# CONTENTS

<b>INTRODUCTION</b>	Page 3
<b>BACKCOURT RECYCLING</b> towards zero waste	Page 4
<b>YOUR BLUE RECYCLING BINS</b>	Page 5
Paper recycling	
Drinks cans & food tins recycling	
Plastic bottles recycling	
FAQs	
<b>RECYCLING CENTRES</b>	Page 10
<b>RECYCLING POINTS</b>	Page 12
<b>MATERIALS RECLAMATION FACILITY</b>	Page 13
<b>BACKCOURT RECYCLING WASTE LOOP</b>	Page 15

Dear Resident

## **Glasgow Backcourt Recycling Service**



Land and Environmental Services is pleased to introduce our new Blue Bin Backcourt Recycling Service for flatted properties in the City.

You will have the opportunity to recycle your newspapers, magazines, tins, cans and plastic bottles.

Recycling YOUR waste:

- Saves the Earth's natural resources
- Saves energy & reduces the risk of climate change
- Reduces the need for landfill.

Glasgow City Council would like to take this opportunity to encourage you to recycle and help improve our environment.

# Backcourt Recycling

## towards zero waste

You have been provided with new Blue Recycling Bins in your backcourt to allow all households in your tenement to recycle paper, cans and plastic bottles from home. A Reusable Bag has also been provided to allow you to store recyclable materials in your home before depositing them into your Blue Bins. Your Reusable Bag is durable so that it can be kept and used again and again.

This guide shows what you can recycle using your Blue Bins, gives details of your nearest Recycling Centres and Points, and explains what happens to the materials you recycle.

For more information about your local recycling and waste collection services, or if you have not received your Reusable Bag, please call the Council's Customer Care Centre on **0141 287 9700** or visit [www.glasgow.gov.uk](http://www.glasgow.gov.uk) or [www.wasteawarescotland.org.uk](http://www.wasteawarescotland.org.uk)





# Blue Bins-Paper

## WHAT

Please use your backcourt Blue Recycling Bins to recycle:

- ✓ Brochures
- ✓ Catalogues
- ✓ Newspapers
- ✓ Magazines
- ✓ Office quality paper
- ✓ Telephone directories
- ✓ Unwanted mail
- ✓ Yellow Pages

Please do not put the following materials into your Blue Bins:

- + Envelopes



Please put paper loose into your Blue Bins, rather than using plastic bags which cannot be recycled through this service. Do not put your Reusable Bag into your Blue Bins. Instead, use it to store recyclable materials in your home.

## WHY

The paper you recycle is sorted in Glasgow City Council's own Materials Reclamation Facility before being sent to a paper mill to be recycled into new paper products, such as newspapers and writing paper.

## WHEN

Your Blue Bins will be emptied once a fortnight from your backcourt. Your general waste bin collection will not be affected.



# Blue Bins-Cans & Tins

## WHAT

Please use your backcourt Blue Recycling Bins to recycle all drinks cans & food tins, including:

- ✓ Alcoholic drinks cans
- ✓ Baked bean tins
- ✓ Fruit & vegetable tins
- ✓ Pet food tins
- ✓ Soft drinks cans
- ✓ Soup tins
- ✓ Spaghetti tins
- ✓ Tuna tins

Please do not put the following materials into your Blue Bins:

- + Paint tins

Please put cans and tins loose into your Blue Bins, rather than using plastic bags, which cannot be recycled through this service. Do not put your Reusable Bag into your Blue Bin. Instead, use it to store recyclable materials in your home.



## WHY

Your cans and tins are taken to Glasgow City Council's own Materials Reclamation Facility where they are separated into steel and aluminium using a magnet and an 'eddy' current. The separated cans and tins are then sent to be recycled into new metal products, including new cans and tins.

## WHEN

Your Blue Bins will be emptied once a fortnight from your backcourt. Your general waste bin collection will not be affected.



# Blue Bins-Plastic bottles

## WHAT

Please use your backcourt Blue Recycling Bins to recycle all plastic bottles including:

- ✓ Detergent bottles
- ✓ Drinks bottles
- ✓ Milk bottles
- ✓ Shampoo bottles

Please do not put the following materials into your Blue Bins:

- + Plastic bags
- + Plastic film & wrapping
- + Plastic food containers
- + Polystyrene
- + Yoghurt pots



Please put plastic bottles loose into your Blue Bins, rather than using plastic bags which cannot be recycled through this service. Do not put your Reusable Bag into your Blue Bins. Instead, use it to store recyclable materials in your home.

## WHY

Your plastic bottles are sorted and baled in Glasgow City Council's own Materials Reclamation Facility before being sent to be recycled into a range of new products, including compost bins and garden furniture.

## WHEN

Your Blue Bins will be emptied once a fortnight from your backcourt. Your general waste bin collection will not be affected.



# Blue Bins-FAQs

## **Why can't I put cardboard in my Blue Bin?**

Cardboard is currently not accepted in the Blue Bin as the reprocessors cannot recycle paper and cardboard together. This is due to differences in fibre quality which affect the end product.



## **Why can't I put glass bottles in my Blue Bin?**

Very small fragments of glass can become mixed with paper which means that the paper is rejected by the reprocessor. Glasgow City Council provides glass Recycling Points so that you can recycle your glass bottles and jars.



## **Why can't I put plastic containers in my Blue Bin?**

Plastic containers (yoghurt and margarine tubs) cannot be placed in the Blue Bin due to the fact they are made from a different type of plastic than plastic bottles and our recycling partners will not accept these items.







# Blue Bins-FAQs

## Why can't I put envelopes in my Blue Bin?

Envelopes cannot be recycled because of the glue which cannot be removed during the paper recycling process. However, envelopes can be reused.



To find your nearest Recycling Centre or Recycling Point, please call the Council's Customer Care Centre on **0141 287 9700** or visit [www.glasgow.gov.uk](http://www.glasgow.gov.uk) or [www.sort-it.org.uk](http://www.sort-it.org.uk)

**Reduce Reuse Recycle** towards zero waste

# Recycling Centres

Glasgow City Council operates four Household Waste & Recycling Centres where you can recycle a wide range of materials.

## WHERE

These Centres can be found at the following addresses:

Dawsholm Disposal Complex  
75 Dalsholm Road, Glasgow, G20 0TB

Polmadie Disposal Complex,  
425 Polmadie Road, Glasgow, G42 0PJ

Shieldhall Disposal Complex,  
200 Bogmoor Road, Glasgow, G51 4SN

Easter Queenslie Complex  
90 Easter Queenslie Road, Glasgow , G33 4UL



Please note: All Centres are for householders only and have a vehicle height restriction of 1.8 metres. Householders with vehicles above this height should contact the Council's Customer Care Centre on **0141 287 9700** to make alternative arrangements. All Centres are open from 8am-8pm Monday-Sunday, last entry 7.45pm.

# Recycling Centres

The following table shows which recyclable materials can be taken to which Recycling Centre.

	Dawsholm	Easter Queenslie	Polmadie	Shieldhall
Books	✓	✓	✓	✓
Cardboard	✓	✓		✓
Car batteries	✓	✓	✓	✓
Drinks cans & food tins	✓	✓	✓	✓
Engine oil	✓	✓	✓	✓
Mixed glass	✓	✓	✓	✓
Paper	✓	✓	✓	✓
Plastic bottles (PET & HDPE)	✓	✓	✓	✓
Textiles	✓	✓	✓	✓
Electrical items		✓		
Garden waste	✓	✓	✓	✓
Rubble	✓	✓	✓	✓
Scrap metal	✓	✓	✓	✓
Wood	✓	✓		✓

# Recycling Points

In addition to four Household Waste & Recycling Centres, smaller Recycling Points are available throughout the City. You may find these Recycling Points particularly useful for recycling common household waste materials that cannot be recycled using your backcourt Blue Recycling Bin, such as glass and textiles.

Please use your Glass Recycling Points to recycle all glass bottles and jars (including cooking sauce and jam jars, coffee and tea jars, beer, wine and cider bottles).

Please use your Textile Recycling Points to recycle clothes, pairs of shoes, towels, blankets and bedding, or donate reusable textiles to charity shops.

You can also recycle extra paper, cans and plastic bottles at Recycling Points.

To find out where your local Recycling Points are located, please visit [www.glasgow.gov.uk](http://www.glasgow.gov.uk) or [www.sort-it.org.uk](http://www.sort-it.org.uk)



# Materials Reclamation Facility

All the paper, cans and plastic bottles you recycle using your backcourt Blue Recycling Bins and Recycling Centres & Points are taken to Glasgow City Council's state of the art Materials Reclamation Facility (MRF) at its site in Polmadie. The recyclable materials are sorted, baled and sent on to be recycled into new products.

The MRF is built over three floors. The operation can be divided into seven stages:

## **Stage 1 – Unloading collection vehicles:**

Paper, cans and plastic bottles are unloaded from the collection vehicle onto the top floor of the MRF.

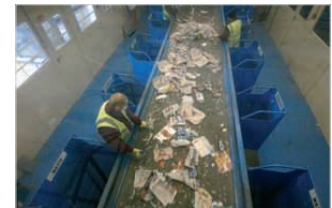


## **Stage 2 – Moving the materials so they can be sorted:**

Paper, cans and plastic bottles are pushed onto a conveyor belt and taken down to the second floor.

## **Stage 3 – Removing contaminants:**

Contaminants can damage the machinery. It is therefore necessary that only paper, plastic bottles and cans are put into your Blue Bins. The conveyor belt runs the paper, cans and plastic bottles past recycling staff, who remove any waste items that would contaminate the materials.



# Materials Reclamation Facility

## **Stage 4 – Separating paper:**

Using recently developed technology, paper is mechanically separated from the cans and plastic bottles. The separated paper is held in a storage bay before going to the paper mill.



## **Stage 5 – Separating cans:**

Cans and plastic bottles continue to pass through the facility. Steel cans are removed by a magnet and aluminium cans are removed by an 'eddy' current. The plastic bottles remain on the conveyor belt.



## **Stage 6 – Separating different types of plastic bottles:**

Plastic bottles are mainly made from two types of plastic: HDPE and PET. Recycling staff are trained to separate the bottles by type. Staff pick off the individual types of plastic and drop them into a designated baler.



## **Stage 7 – Sending materials to be recycled:**

After the paper, cans and different types of plastic bottles have been separated, they are baled and sent to be recycled into new products.

# Backcourt Recycling Waste Loop



# Let us help you towards zero waste.

If you have any queries, or would like to find out more, please contact the Council's Customer Care Centre on **0141 287 9700** or visit [www.glasgow.gov.uk](http://www.glasgow.gov.uk) or [www.wasteawarescotland.org.uk](http://www.wasteawarescotland.org.uk)



**Reduce Reuse Recycle** towards zero waste  
[www.wasteawarescotland.org.uk](http://www.wasteawarescotland.org.uk)

