



A New Era in Dental Education.

Ziad Al-Ani, Wendy Skinner and Jeremy Bagg

Email: z.al-ani@dental.gla.ac.uk
University of Glasgow Dental School

Summary

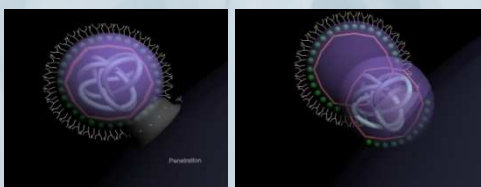
- CLEO is a project funded by NHS Education for Scotland to develop a repository of high quality digital learning objects for use in dental education across Scotland.
- This is a collaborative project between the Universities of Glasgow, Dundee, Edinburgh and Aberdeen.

Aims

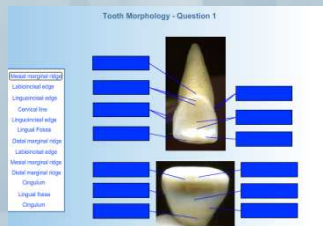
- Provide academics with robust, re-usable learning objects for inclusion within their teaching.
- Meet the needs and expectations of students by providing learner empowerment, particularly in the transition to higher education.
- Utilise a variety of media and digital teaching methods to influence the students' learning experiences by catering to their assorted learning styles.

Results

- The emphasis is on developing high quality, engaging and interactive activity-focussed resources designed to meet learning goals and to support student-centred learning and CPD.
- These free resources will be made available for sharing by all of those involved in delivering dental education across the four Scottish Dental Schools.
- The resources can also be used by NHS Education.

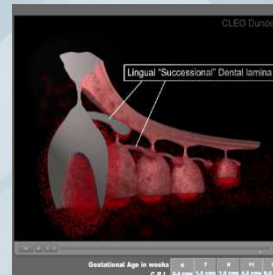
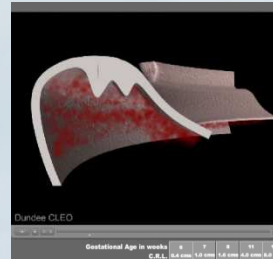


An example of high quality Interactive animations representing cell infection by human herpes viruses (developed by Glasgow CLEO team)



Interactive quizzes are an essential elements of CLEO learning objects. These can be used by academics in lectures, seminars or as self-study by students.

Resources will include diagrams, photographs, video and audio podcasts, interactive animations, and quizzes, all of which can be used online anytime and anywhere as well as in lectures or seminars. These objects can be used in a variety of learning environments either for group activities e.g lectures or seminars, or for individual study through a VLE such as Moodle. The CLEO project will ultimately provide a high quality, adaptable and dynamic electronic resource to support dental education.



3D model of tooth development developed by the Dundee CLEO team.



Special imaging techniques are utilised by the Edinburgh CLEO team to record certain clinical procedures e.g. crown preparation.

A common development process, employing appropriate interoperability standards and specifications, has been defined and implemented to ensure accessibility and usability. CLEO adopts a technical platform which enables effective sharing of existing content, collaborative development of new content and delivery of a range of common services to support the educational process. This platform is based on a robust and secure authentication system, to provide an electronic repository of learning resources, and enable academics to download resources and deliver them through local learning management systems.

Acknowledgments

NHS Education for Scotland

The authors would also like to thank the following contributors for giving permissions to use images of their learning objects in this poster:

- Thomas Griffin & Mounir Atassi: University of Dundee
- Jackie Aim, Krish Bhatia & Michael Begg: University of Edinburgh