

**Professor David Logue**

BVM&S PhD DipECBHM FRCVS  
d.logue@vet.gla.ac.uk  
+44 (0) 141 330 3277

*Reproduction and fertility (male and female)  
Lameness*

**Professor Nick Jonsson**

BVSc PhD DipECBHM MRCVS  
N.jonsson@vet.gla.ac.uk  
+44 (0) 141 330 5739

*Parasite resistance  
Bovine health management  
Clinical parasitology  
Veterinary Public Policy*

**Professor Dom Mellor**

BVMS PhD DipECVPH MRCVS  
D.Mellor@vet.gla.ac.uk  
+44 (0) 141 330 5742

*Veterinary Public Health  
Population Medicine*

**Mr William Steele**

OV BVMS MRCVS  
Head of Division  
w.steele@vet.gla.ac.uk

+44 (0) 141 330 5739  
*Veterinary Public Health  
Food Safety  
Environmental Health*

**Mr David Barrett**

BVSc DCHP DBR DipECBHM MRCVS  
d.barrett@vet.gla.ac.uk  
+44 (0) 141 330 5728

*Bovine Medicine  
Reproduction and fertility (male and female)  
Lameness*

**Dr Kathryn Ellis**

BVMS PhD CertCHP DipECBHM MRCVS  
k.ellis@vet.gla.ac.uk  
+44 (0) 141 330 5724

*Organic production & animal health  
Ruminant gastrointestinal parasite control  
BVD control programmes*

**Dr Thomas Wittek**

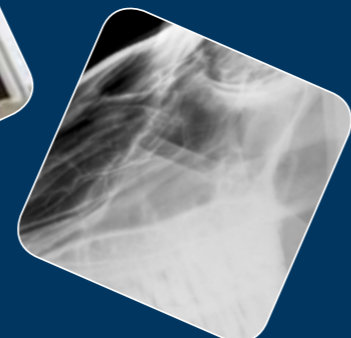
PD Dr med.vet.habil DipECBHM MRCVS  
t.wittek@vet.gla.ac.uk  
+44 (0) 141 330 5735

*Gastroenterology  
Abdominal surgery  
Metabolic disorders  
South American Camelids  
Acupuncture*

**Professor Stuart Reid**

BVMS PhD DVM DipECVPH FRSE MRCVS  
Dean of Veterinary Medicine  
dean@vet.gla.ac.uk  
+44 (0) 141 330 5702

*Veterinary Public Health  
Population Medicine*



Scottish Centre for Production Animal Health and Food Safety  
Telephone: +44 (0) 141 330 5739  
Direct dial: +44 (0) 141 330 5815  
Direct Fax: +44 (0) 141 330 5729  
Web [www.gla.ac.uk/faculties/vet/guscotpa](http://www.gla.ac.uk/faculties/vet/guscotpa)  
General Enquiries: [enquiries@vet.gla.ac.uk](mailto:enquiries@vet.gla.ac.uk)

Design: FBLS Graphic Support Unit, University of Glasgow  
The University of Glasgow, charity number SC004401



University of Glasgow | Scottish Centre for Production  
Animal Health & Food Safety



[www.gla.ac.uk/faculties/vet/guscotpa](http://www.gla.ac.uk/faculties/vet/guscotpa)

